

## DiskStation DS425+



**Brand:** Synology

**Product Code:** DiskStation DS425+

**Availability:** 10

**Weight:** 2.18kg

**Dimensions:** 223.00mm x 199.00mm x  
166.00mm

**Price: 38,500.00EGP**

### Short Description

Synology 4 Bay DiskStation DS425+

### Description

**Take command of your most important data**



**Secure private cloud**

Anywhere, anytime secure access to all your data.



## **Data sharing made easy**

Streamline teamwork and access to shared files.



## **Hassle-free backups**

Effortlessly protect files using intuitive tools.

## **Productivity in the private cloud**

DS124 is designed for professionals to share, sync, and work together more efficiently.

## **Anytime, anywhere access**

Access, manage, and share your files and media from anywhere with Synology Drive. Available on PC, Mac, Linux, Chromebook, Android, iOS, or any device equipped with a browser.



## **Intelligent backup and syncing**

Safeguard against ransomware attacks or accidental deletion with real-time or scheduled folder backups. Reduce local storage use with on-demand sync, only downloading files as needed.

## Project

Name	Status	Date modified	Type
Export	✓ Downloaded	10/30/2022 9:59 AM	File folder
Frame	☁ Online	3/15/2022 4:27 AM	SVG File
Mockup	✓ Pinned	4/30/2022 5:16 AM	PNG File
Layout	☁ Online	8/15/2022 9:30 AM	PDF File
Spec	✓ Downloaded	9/21/2022 8:16 AM	TXT File

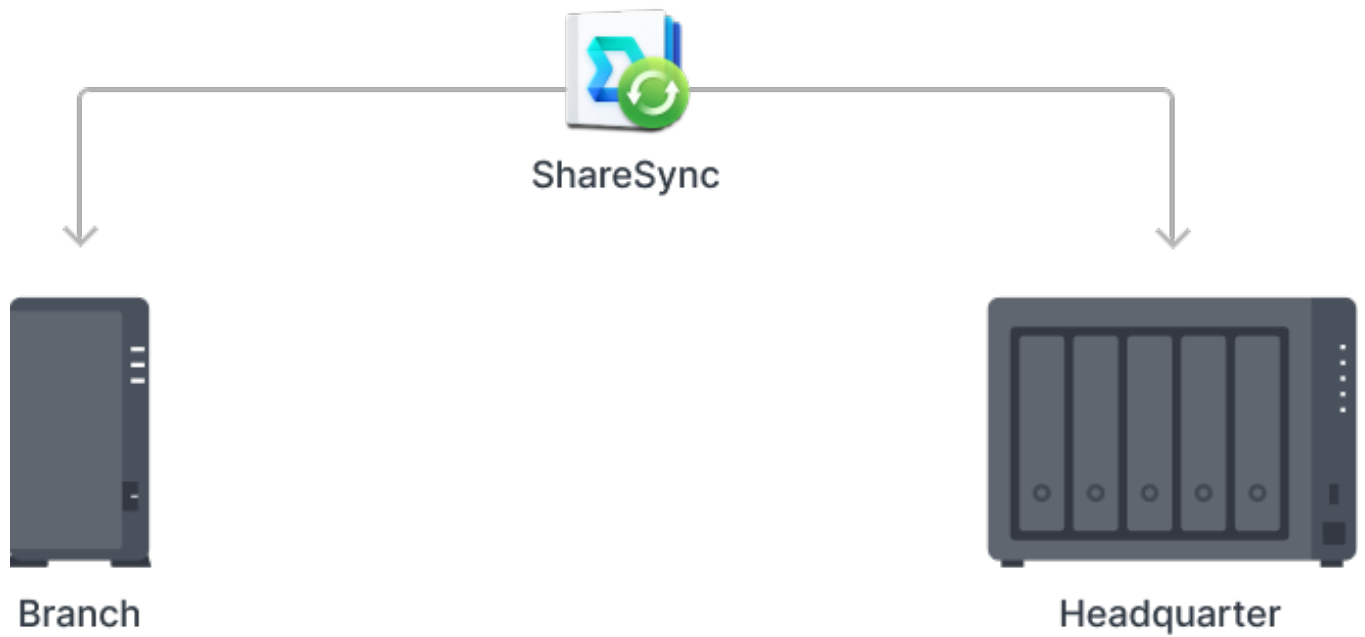
### Seamless cloud syncing

Synchronize files between your DS124 and public cloud services using Synology Cloud Sync. Retain local backup copies of data stored on Google Drive, Dropbox, Microsoft OneDrive, and more, and ensure data ownership.



## **Sync up with teams, even at the edge**

Automatically keep data synchronized between Synology systems in different locations with Synology Drive ShareSync to improve cross-site workflows.



## **Store, share, and protect**

Use your DS124 to manage all your documents, photos, and other files, or protect your physical assets with professional video surveillance.

---

## **Photo management**

### **Manage your photo collection**

Organize your photos and videos with smart and intuitive features. Browse automatically

generated albums using facial recognition, geolocation, tags, and more.

### **Sharing made safer and easier**

Securely share media with others while leveraging enhanced privacy features for greater peace of mind. Create a Shared Space to work together with invitees using a folder-based media library.

Securely share media with others while leveraging enhanced privacy features for greater peace of mind. Create a Shared Space to work together with invitees using a folder-based media library.

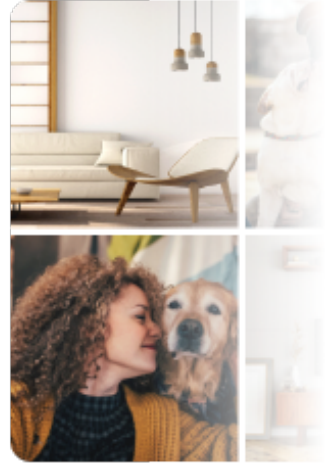
## People



## Places



## Tags



---

## Video surveillance



### **Wide compatibility**

Choose from over 8,300 IP cameras or ONVIF devices compatible with Synology Surveillance Station to keep your premises secure.

### **Universal access**

Watch live camera streams through web browsers, desktop clients, or mobile apps. Get notified of events and take immediate action.

Watch live camera streams through web browsers, desktop clients, or mobile apps. Get notified of events and take immediate action.



## **Add an extra layer of protection**

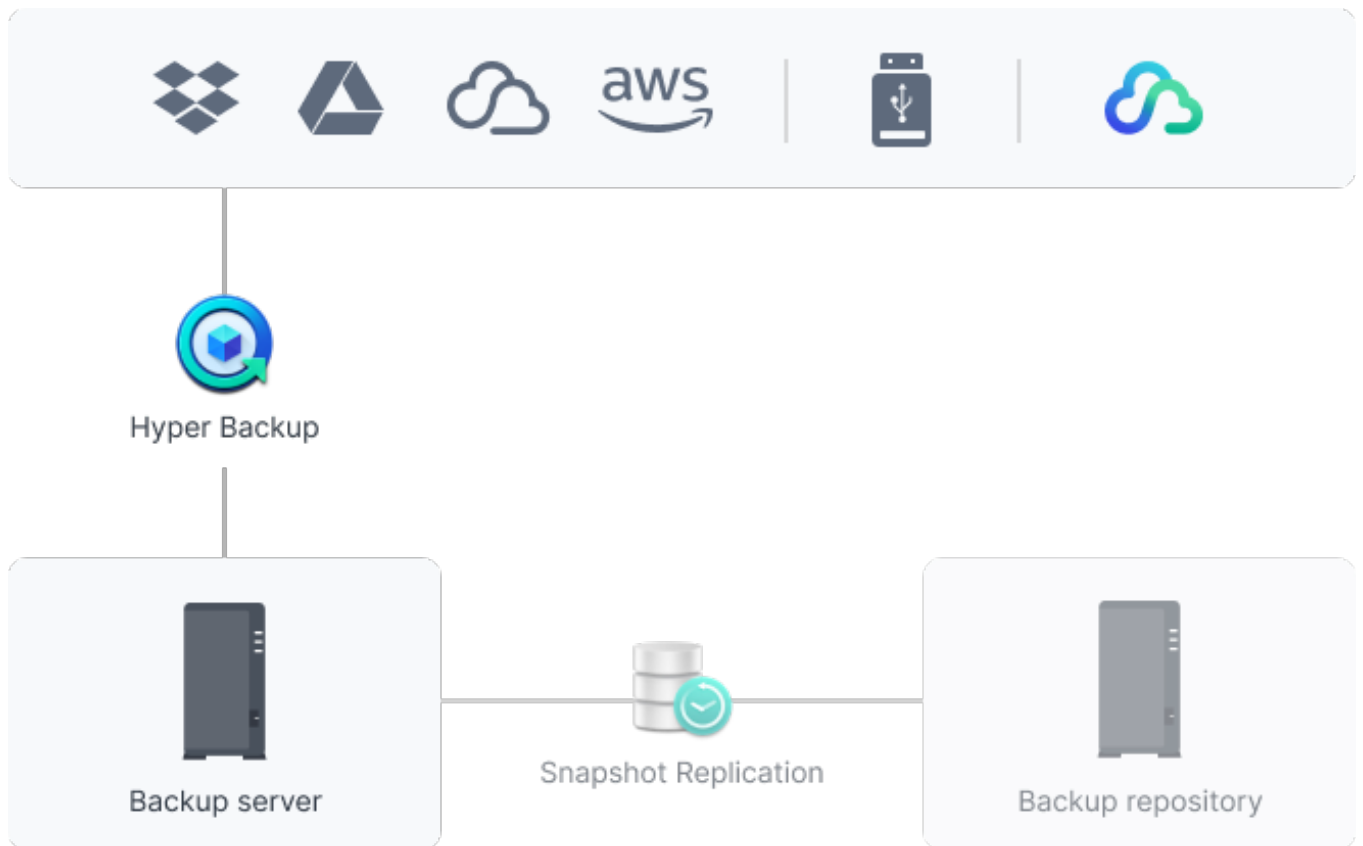
### **Perform full Synology system backups**

Back up your entire Synology device, including system settings and applications, or select specific folders. Transfer all backup data to multiple destinations using Hyper Backup.

## **Keep your data safe with snapshots**

Take your data protection to the next level by creating automatic point-in-time snapshots of shared folders that can be copied off-site and rapidly restored using Snapshot Replication.

Take your data protection to the next level by creating automatic point-in-time snapshots of shared folders that can be copied off-site and rapidly restored using Snapshot Replication.



## Software

DSM Specifications		
<a href="#">Storage Management</a>	Maximum Single Volume Size	108 TB
	Maximum Internal Volume Number	32
	M.2 SSD Storage Pool Support*	yes
	SSD Read/Write Cache ( <a href="#">Determining cache size</a> )	yes
	SSD TRIM	yes

	Supported RAID Type	<ul style="list-style-type: none"> <li>• Synology Hybrid RAID</li> <li>• Basic</li> <li>• JBOD</li> <li>• RAID 0</li> <li>• RAID 1</li> <li>• RAID 5</li> <li>• RAID 6</li> <li>• RAID 10</li> </ul>
	RAID Migration	<ul style="list-style-type: none"> <li>• Basic to RAID 1</li> <li>• Basic to RAID 5</li> <li>• RAID 1 to RAID 5</li> <li>• RAID 5 to RAID 6</li> </ul>
	Volume Expansion with Larger HDDs	<ul style="list-style-type: none"> <li>• Synology Hybrid RAID</li> <li>• RAID 1</li> <li>• RAID 5</li> <li>• RAID 6</li> <li>• RAID 10</li> </ul>
	Volume Expansion by Adding a HDD	<ul style="list-style-type: none"> <li>• Synology Hybrid RAID</li> <li>• JBOD</li> <li>• RAID 5</li> </ul>
	Global Hot Spare Supported RAID Type	<ul style="list-style-type: none"> <li>• Synology Hybrid RAID</li> <li>• RAID 1</li> <li>• RAID 5</li> </ul>
	Notes	<ul style="list-style-type: none"> <li>• Each internal volume (may consist of multiple drives) is expandable up to 108TB.</li> <li>• Actual maximum storage pool and volume sizes depend on drive sizes used, the number of drive bays available, and the RAID configuration.</li> <li>• Usable capacity for each volume</li> </ul>

		<p>will be lower than the maximum volume size and is dependent on the filesystem and the amount of system metadata stored.</p> <ul style="list-style-type: none"> <li>• Creating M.2 storage pools requires the use of Synology-verified SSDs, which are rigorously tested under extreme temperature conditions. Thermal parameters for SSDs and NAS units are fine-tuned to ensure optimal management of thermal conditions under I/O-intensive environments. (<a href="#">Learn more</a>)</li> </ul>
<a href="#">File System</a>	Internal Drives	<ul style="list-style-type: none"> <li>• Btrfs</li> <li>• ext4</li> </ul>
	External Drives	<ul style="list-style-type: none"> <li>• Btrfs</li> <li>• ext4</li> <li>• ext3</li> <li>• FAT32</li> <li>• NTFS</li> <li>• HFS+</li> <li>• exFAT</li> </ul>
<a href="#">File Services</a>	File Protocol	<ul style="list-style-type: none"> <li>• SMB</li> <li>• AFP</li> <li>• NFS</li> <li>• FTP</li> <li>• WebDAV</li> <li>• Rsync</li> </ul>
	Maximum Number	10

	of SMB Connections (FSCT-Based)	
	Windows Access Control List (ACL) Integration	yes
	NFS Kerberos Authentication	yes
	Notes	<ul style="list-style-type: none"> <li>• Connection value of this model is tested with Synology SATA HDD fully populated and all onboard network ports</li> <li>• Models with expandable memory are tested with the maximum supported quantity installed.</li> <li>• SMB performance was evaluated using Microsoft File Server Capacity Tool (FSCT) version 1.3, with the following configuration: <ul style="list-style-type: none"> <li>◦ Test workload: HomeFolder scenario provided by the FSCT tool</li> <li>◦ Test duration: 600 seconds</li> <li>◦ Domain controller &amp; FSCT controller: Windows Server 2022</li> <li>◦ FSCT clients: 8 × Windows 10 machines</li> <li>◦ SMB feature: Directory leasing enabled</li> </ul> </li> </ul>
<a href="#">Account &amp; Shared Folder</a>	Maximum Local User Accounts	512
	Maximum Local Groups	128
	Maximum Shared Folder	128



	Maximum Shared Folder Sync Tasks	4
<a href="#">Hybrid Share</a>	Hybrid Share Folder Number	10
<a href="#">Hyper Backup</a>	Data & Folder Backup	yes
	Entire System Backup	yes
<a href="#">High Availability</a>	Synology High Availability	yes
<a href="#">Log Center</a>	Syslog Events per Second	800
Virtualization	VMware vSphere	ESXi 8.0 U2, ESXi 8.0 U1, ESXi 8.0, ESXi 7.0 U3, ESXi 7.0 U2, ESXi 7.0 U1, ESXi 7.0, ESXi 6.7 U3, ESXi 6.7 U2, ESXi 6.7 U1, ESXi 6.7, ESXi 6.5 U3, ESXi 6.5 U2, ESXi 6.5 U1, ESXi 6.5
	Microsoft Hyper-V	Windows Server 2022
	Citrix XenServer	XenServer 8, Citrix Hypervisor 8.2 LTSR CU1
	OpenStack	Cinder
<a href="#">General Specifications</a>	Supported Protocols	SMB1 (CIFS), SMB2, SMB3, NFSv3, NFSv4, NFSv4.1, NFS Kerberized sessions, iSCSI, HTTP, HTTPs, FTP, SNMP, LDAP, CalDAV
	Supported Browsers	<ul style="list-style-type: none"> <li>• Chrome</li> <li>• Firefox</li> <li>• Edge</li> <li>• Safari</li> </ul>
	Supported Language	English, Deutsch, Français, Italiano, Español, Dansk, Norsk, Svenska, Nederlands, ??????, Polski, Magyar, Português do Brasil, Português Europeu, Türkçe, ?eský, ??????, ???, ???, ????, ????
	Notes	For an updated list of supported browser versions, check the <a href="#">DSM Technical</a>

		<a href="#">Specifications.</a>
Add-on Packages <a href="#">view the complete package list</a>		
<a href="#">Central Management System</a>	yes	
Synology AI Console	Third-Party AI Model Integration	yes
<a href="#">Synology Chat</a>	Maximum Number of Users	100
	Notes	<ul style="list-style-type: none"> <li>• Measured with simulated users, each with an average record of 20,000 messages, emojis, or stickers. The required server response time is below ten seconds.</li> <li>• Models with expandable memory are tested with the maximum supported quantity installed.</li> </ul>
Download Station	Maximum Concurrent Download Tasks	80
<a href="#">SAN Manager</a>	Maximum iSCSI Target Number	2
	Maximum LUN	4
	LUN Clone/Snapshot, Windows ODX	yes
<a href="#">Synology MailPlus / MailPlus Server</a>	Free Email Accounts	5 ( <a href="#">Additional accounts require purchase of licenses</a> )
	Maximum Number of Users	20
	Notes	<ul style="list-style-type: none"> <li>• The suggested maximum number of users is based on the following workload: 20% of users with a 20,000 item mailbox randomly performing actions and receiving 240 emails per day, and 80% of users receiving 20 emails per day. <a href="#">Learn more</a></li> <li>• Models with SSD support are tested</li> </ul>

		<p>with a single SSD volume.</p> <ul style="list-style-type: none"> <li>Models with expandable memory are tested with the maximum supported quantity installed. <a href="#">Learn more about memory requirements.</a></li> <li>Operating in high-availability mode will incur additional overhead.</li> <li>Features enabled during evaluation: anti-spam, anti-virus, DNSBL, greylist, content scanning, and full-text search (English).</li> </ul>
<a href="#">Media Server</a>	DLNA Compliance	yes
<a href="#">Synology Photos</a>	Facial Recognition	yes
	Object Recognition	yes
	Notes	Object recognition requires an upgrade of memory capacity to a minimum of 4 GB.
<a href="#">Snapshot Replication</a>	Maximum Snapshots per Shared Folder	128
	Maximum of System Snapshots	1,024
<a href="#">Surveillance Station</a>	Default Licenses	2 ( <a href="#">Additional cameras require purchase of licenses</a> )
	Maximum IP Cameras and Total FPS (H.264)	<ul style="list-style-type: none"> <li>1080p: 40 channels, 800 FPS</li> <li>3M: 35 channels, 350 FPS</li> <li>5M: 28 channels, 280 FPS</li> <li>4K: 17 channels, 170 FPS</li> </ul>
	Maximum IP Cameras and Total FPS (H.265)	<ul style="list-style-type: none"> <li>1080p: 40 channels, 1200 FPS</li> <li>3M: 40 channels, 600 FPS</li> <li>5M: 40 channels, 480 FPS</li> <li>4K: 20 channels, 200 FPS</li> </ul>

	Notes	<ul style="list-style-type: none"> <li>• Performance figures are obtained from testing conducted with the device fully populated with drives, with their default memory configuration, and under a continuous recording setup. Actual system capabilities may vary based on configuration, drive performance, enabled features, and the presence of additional workloads.</li> <li>• Use <a href="#">NVR Selector</a> to quickly find a suitable model based on your requirements.</li> <li>• The number of video channels that can be viewed simultaneously is double the maximum number of cameras for the same codec and resolution.</li> </ul>
<a href="#">Synology Drive</a>	Maximum Number of Users	20
	Maximum Number of Hosted Files	500,000 (applies to files indexed or hosted by <a href="#">Synology Drive</a> . For file access through other standard protocols, refer to the File Services section above)
	Notes	<ul style="list-style-type: none"> <li>• The suggested maximum number of users is based on the following workload: 20% of users randomly perform file operations (upload, download, move, and delete), and 80% of users are logged in but idle. <a href="#">Learn more</a></li> <li>• Models with SSD support are tested</li> </ul>

		<p>with a single SSD volume.</p> <ul style="list-style-type: none"> <li>• Models with expandable memory are tested with the maximum supported quantity installed.</li> <li>• Exceeding the recommended numbers above will not block application operations, but may result in longer response time.</li> <li>• Btrfs file system and non-encrypted shared folders were used during the aforementioned testing.</li> </ul>
<a href="#">Synology Office</a>	Maximum Number of Users	20
	Notes	<ul style="list-style-type: none"> <li>• The suggested maximum number of users is based on the following workload: 20% of users are executing random actions at an average of 30-second intervals, and 80% of users are logged in and viewing a file. <a href="#">Learn more</a></li> <li>• Models with SSD support are tested with a single SSD volume.</li> <li>• Models with expandable memory are tested with the maximum supported quantity installed.</li> <li>• Client performance may affect maximum simultaneous editing users. Client PCs used for testing: Intel Core i3-3220 / 8GB RAM</li> </ul>

<a href="#">Virtual Machine Manager</a>	Recommended Virtual Machine Instances	2 ( <a href="#">Learn more</a> )
	Recommended Virtual DSM Number ( <a href="#">Licenses required</a> )	2 (including 1 Free License)
	Notes	The specifications vary depending on system configuration and memory size.
<a href="#">VPN Server</a>	Maximum Connections	4

## Specification

NAS	
CPU Model	Intel Celeron J4125
CPU Quantity	1
CPU Core	4
CPU Architecture	64-bit
CPU Frequency	2.0 (base) / 2.7 (turbo) GHz
Hardware Encryption Engine	yes
Memory	2 GB DDR4 non-ECC
Drive Bays	4
Compatible Drive Type	3.5
RJ-45 1GbE LAN Port	1
USB 3.2 Gen 1 Port	2
System Fan	92 mm x 92 mm x 2 pcs
Maximum Memory Capacity	6 GB (2 GB + 4 GB)
M.2 Drive Slots	2 (NVMe)
RJ-45 2.5GbE LAN Port	1

## Product Gallery

