



??????? :: ??? ?? ??? ??
??? ?????? :: TS-264
???? ???????? :: ?? 12 ??? 18 ???
?????: 0.00kg
???????0.00cm x 0.00cm x 0.00cm

?????: **0.00EGP**

??? ?????

TS-264 is a compact 2-bay NAS with superior performance. Supporting up to 24 TB storage and 4 TB M.2 SSD caching* at an affordable price, the TS-264 fulfills your multitasking challenges for file management, backup, collaboration, and video conversion.

??? ?????

The TS-264 uses the QTS operating system by default. You will be able to switch to using the QuTS hero operating system. QuTS hero provides benefits such as ZFS data integrity and WORM technology to prevent data tampering. (Switching to QuTS hero is supported starting from QTS 5.2.1.)

Using two 3.5-inch 24 TB hard drives in RAID 1 and two 2 TB M.2 SSDs. Hard drives and SSD sold separately.

- **2.5GbE is a must!**

TS-264 is as fast as a single-port 10GbE NAS with up to 589 MB/s transfer speeds by setting port trunking with the two built-in 2.5GbE (2.5G/1G/100M)

ports.

- **Quad-core for multitasking**

Perform additional tasks, stream more media, and have more services running with an Intel® quad-core processor optimized for multitasking.

- **Smooth video conversion**

Built-in GPU for enhanced video conversion, allowing videos to be smoothly streamed from the NAS to mobile devices.

- **Upgrade to dual-port 10GbE**

Futureproof your network connection by installing a PCIe dual-port 10GbE network card that delivers up to 1,644 MB/s transfer speed.

- **Faster USB transfer**

Two USB 3.2 Gen 2 (10Gbps) ports allow faster backup to/from USB devices.

- **More M.2 NVMe SSDs**

If two M.2 slots aren't enough, install a QM2 PCIe expansion card for more M.2 SSD slots.



QNAP TS-264

Best Choice for Home NAS of 2023 by Wirecutter, The New York Times

2.5GbE NAS is a must in 2024

With increasing availability on switches, motherboards, and laptops, 2023 is the year of 2.5GbE. By setting port trunking with the two built-in 2.5GbE (2.5G/1G/100M) ports to unleash network potential and increase fault tolerance, the TS-264 delivers up to 589 MB/s transfer speeds for fast data access workflow.

Learn More: [QNAP 2.5GbE solution](#)

- **TS-264 (1 x 2.5GbE)**

Read

295 MB/s

Write

295 MB/s

- **TS-264 (2 x 2.5GbE)**

Read

589 MB/s

Write

589 MB/s

Test environment:

NAS: TS-264, Intel Celeron N5095 processor, 2900 MHz (4C4T), 8GB, 2 x Samsung 960 PRO 1 TB, RAID 1, QTS 5.0.0

Client PC: Intel i7-6700 3.4GHz, DDR4 64GB, Windows Server 2016 Standard

IOmeter: RAM*4, 30-sec ramp up time, 3-min seq. run time, 1 workers, 32-outstanding

New-generation quad-core processor for optimized performance

- **Processor**

Intel® Celeron® N5095 quad-core processor, burst up to 2.9 GHz

- **Memory**

Built-in 8 GB DDR4 memory

- **GPU**

Built-in Intel® UHD Graphics to speed up video processing and graphical computing

- **Encryption Engine**

Features Intel® AES-NI 256 hardware-accelerated encryption to boost system performance while securing sensitive data.

Upgrade to dual-port 10GbE with a PCIe network card

With a superior hardware design, you can install a dual-port 10GbE network

card [QXG-10G2TB](#) in the TS-264. Combining 10GbE networking, quad-core processor, and M.2 SSD caching, the TS-264 unleashes its full performance potential.

- **TS-264 (2 x 10GbE)**

Read

1644 MB/s

Write

1272 MB/s

[Check detail performance data](#)



Expand storage capacity up to 14 hard drives

TS-264 supports a storage capacity of up to 24 TB by installing two 3.5-inch 24 TB hard drives in RAID 1. By connecting a [TL-D1600S](#) QNAP storage expansion unit, you can add an additional fourteen hard drives to the TS-264 to achieve up to 280 TB storage space to meet growing storage requirements.

- Storage capacity up to

24 TB



Accelerate AI-powered image recognition and caching with TPU and PCIe expansion

TS-264 has two M.2 PCIe Gen 3 slots for installing NVMe SSD (including Apacer®, Micron®, Seagate®, WD®, and more) or Edge TPU.

[How to Install](#)

M.2 SSDs are sold separately. As M.2 SSD operations can easily generate excessive heat,

it is recommended to install a heatsink on M.2 SSDs.

2 x M.2 2280 PCIe Gen 3 x1 slots

- **Install M.2 NVMe SSDs for cache acceleration or efficient tiered storage**

If you have a huge number of small files requiring read/write operations, you can easily boost IOPS of TS-264 by configuring its two M.2 SSDs as a cache disk.

When transmitting bigger files, you can create a storage pool with two M.2 SSDs. With Qtier automatically moving hot data to SSD and cold data to hard drives, TS-264 allows you to enjoy exceptional application performance.

Learn More: [SSD cache](#), [Qtier](#)

- **Accelerate AI-powered image recognition with TPU**

By leveraging a Edge TPU to QNAP AI Core (the AI-powered engine for image recognition), the TS-264 can perform high-speed face and object recognition. Edge TPU enables QuMagie to quickly process thousands of photos with high-speed AI Image recognition and classification, and QVR Face to analyze real-time video for instant facial recognition.

Note: Purchase from the [Coral website](#)

Learn More: [QuMagie](#), [QVR Face](#)

Abundant I/O capabilities with PCIe expansion

QNAP offers a wide range of expansion cards to add versatile functions to your NAS.

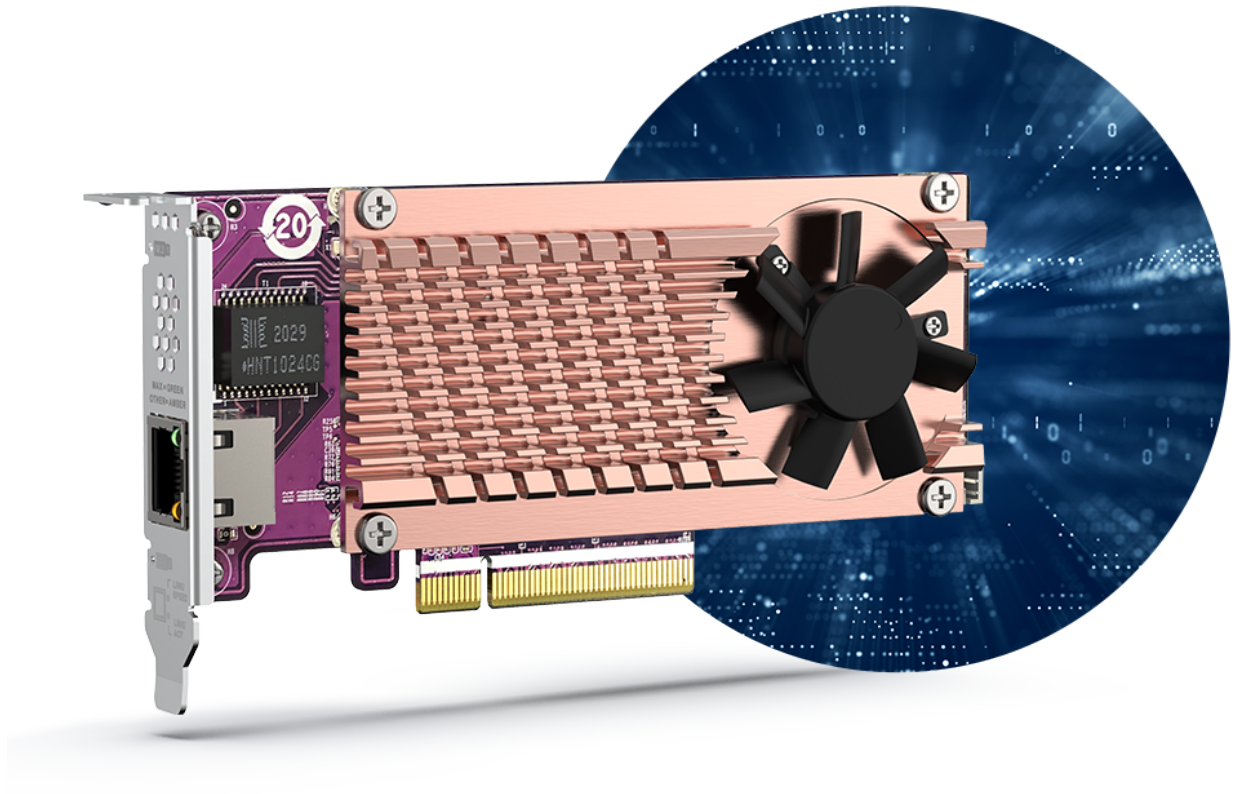
The TS-264 has one PCIe Gen 3 x2 slot that supports various expansion cards for expanding application potential.

- **QM2 card**

QM2-2P10G1TB

Add a 10GbE port and two M.2 SSD slots at the same time.

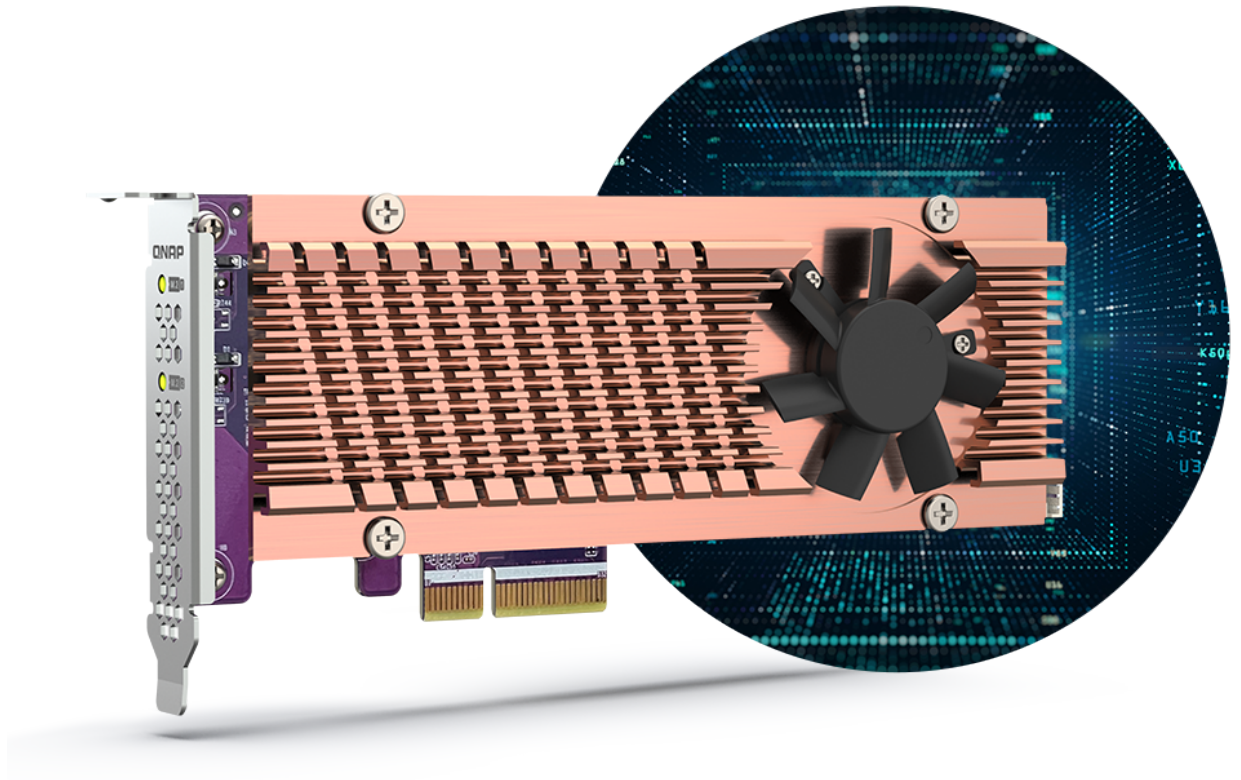
Learn More: [QM2 expansion card](#)



- **QM2 card**

QM2-2P-344A

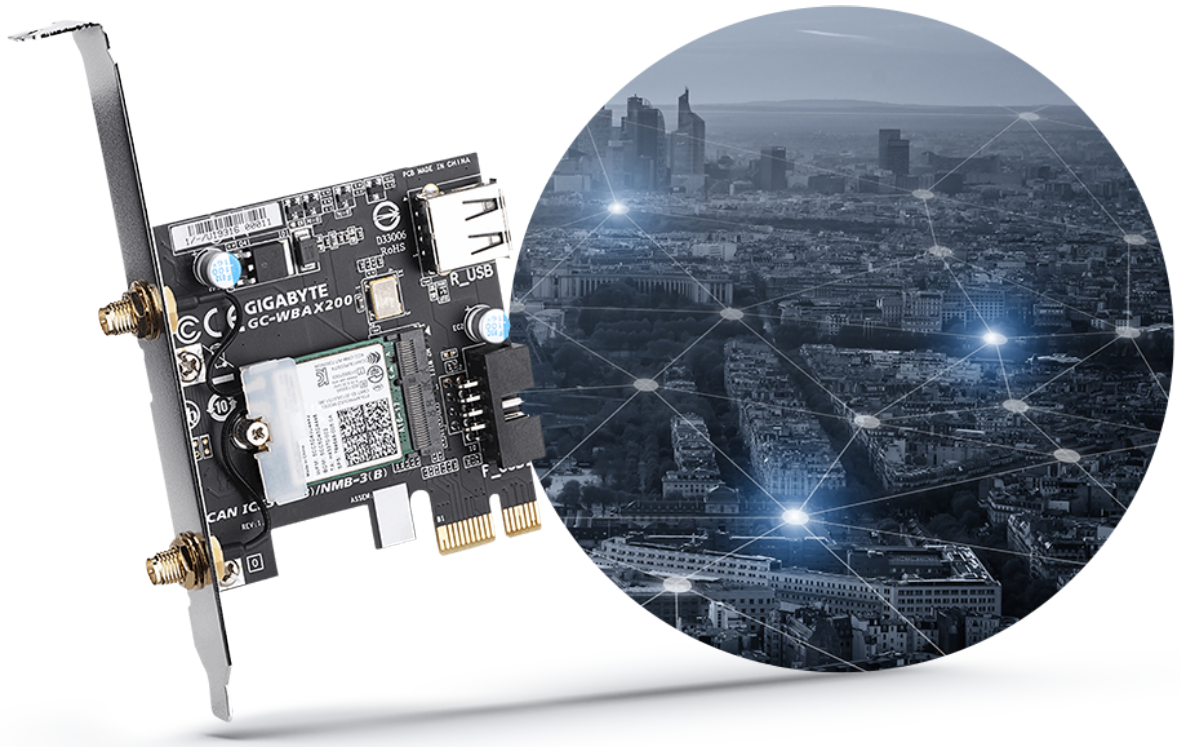
Add two M.2 SSDs to create a storage pool with larger capacity caching with the built in M.2 SSDs.



- **Wi-Fi 6 adapter**

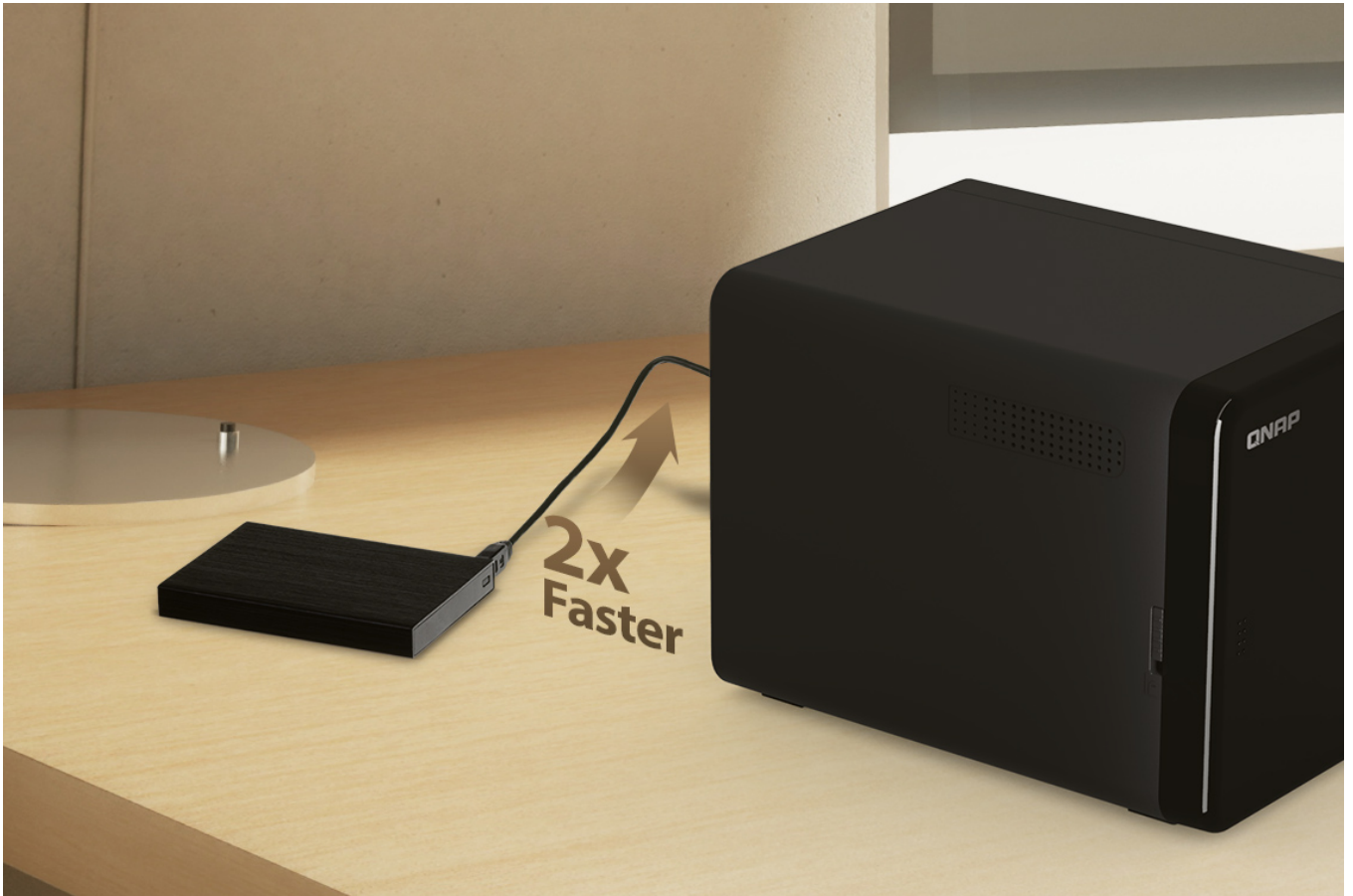
Install a Wi-Fi 6 adapter to turn the TS-264 into a Wi-Fi NAS, allowing accessing NAS data via wireless network.

Learn More: [QNAP Wi-Fi 6 wireless network expansion card](#)



One Touch Copy backup with USB 3.2 Gen 2

TS-264 provides two 10Gbps USB 3.2 Gen 2 ports for faster file transfer to/from USB 3.2 Gen 2 devices. The One Touch Copy button also allows you to back up the contents of USB devices to the TS-264 with a single button press.



Smoother mobile experience with GPU

Taking a lot of photos with your smartphone? [Qfile](#) mobile app will help you free up space by automatically backing up photos to the TS-264. With Intel® UHD Graphics, the TS-264 greatly speeds up converting videos to 1080p / 720p, allowing for smooth streaming to mobile devices over varying mobile network speeds.



Use your NAS like a PC

QNAP's exclusive [Virtualization Station](#) enables running multiple Windows®/Linux® virtual machines. By connecting a keyboard, mouse, and HDMI™ monitor, you can easily use the TS-264 as a PC.



QTS 5, Fast, smooth, and easy-to-use!

The TS-264 comes with the QTS 5 operating system as standard, providing a next-generation usage experience with an updated system kernel, optimized user interface, and advanced security features.

Learn More: [QTS 5](#)

- **Brighter. Smoother. You'll like it.**

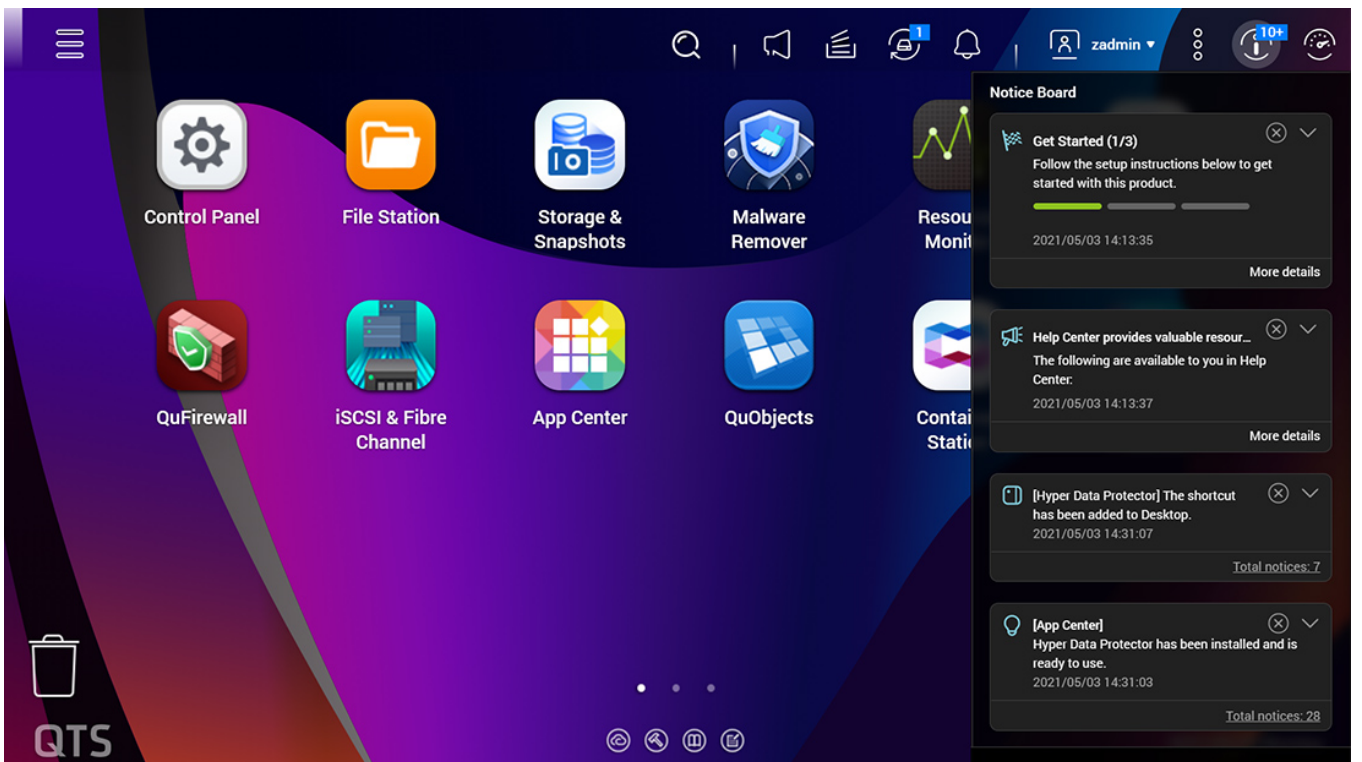
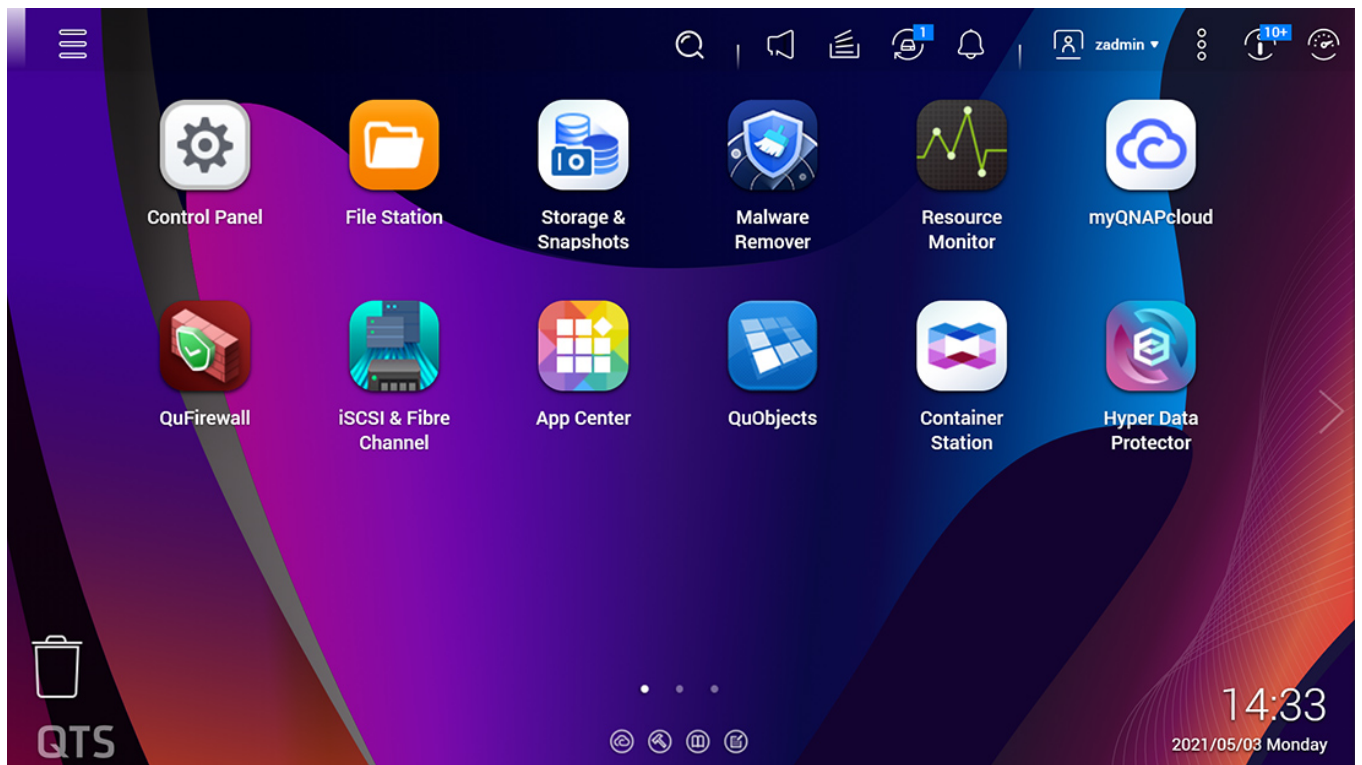
When navigating QTS 5, you will notice a finer attention to detail for a superior browsing experience. Enjoy a smoother NAS experience, comfortable visual design, and find your favorite apps quicker.

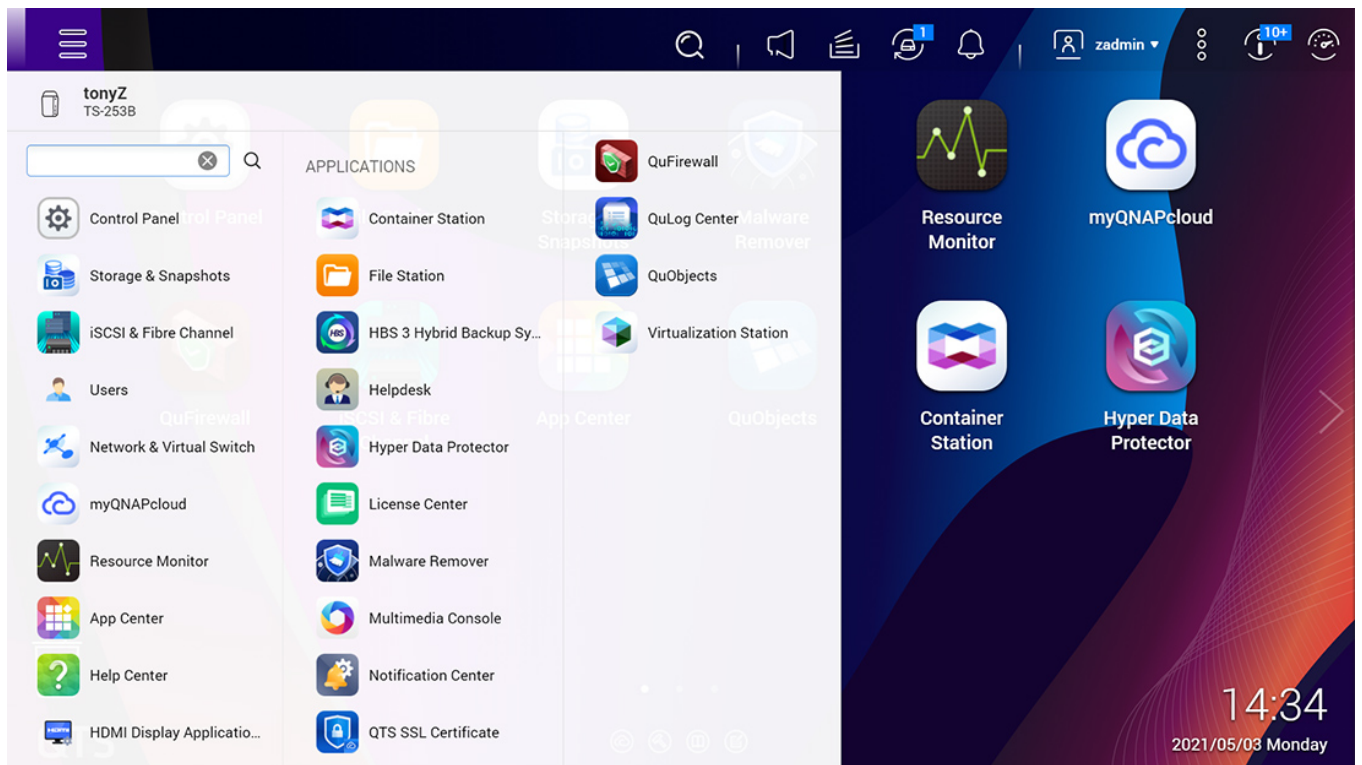
- **Get started with the notice board**

When performing first-time installation, the notice board guides you through the setup process. Simply follow the step-by-step instructions for a quick and easy setup.

- **Smooth and reactive user interface**

Whether clicking buttons, switching between apps, expanding/collapsing windows – every action is much smoother. The search bar in the main menu also assists in quickly finding desired apps.





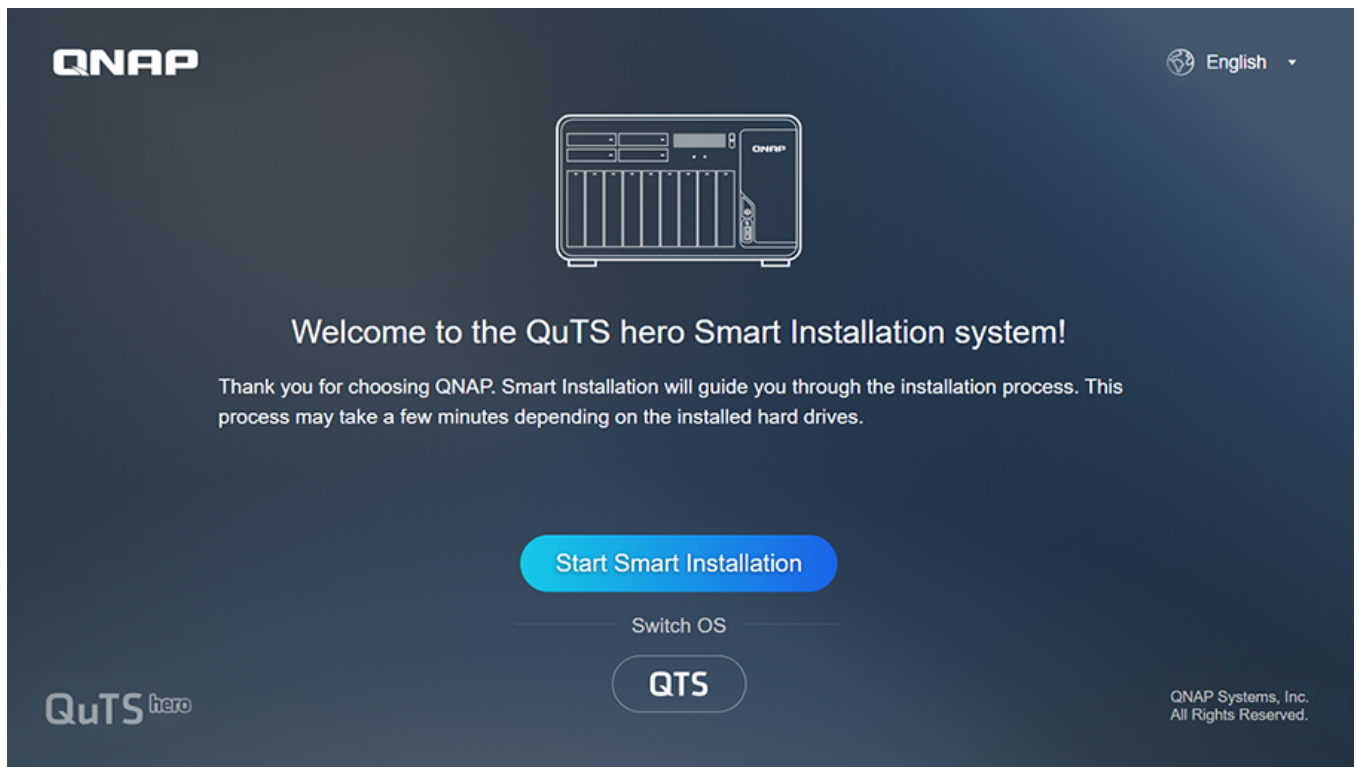
Switch to QuTS hero operating system

for optimal data integrity and reliability

The TS-264 also supports [QuTS hero - QNAP's ZFS-based NAS operating system](#), providing end-to-end data integrity, WORM protection, data reduction (inline data deduplication, compression, and compaction), and much more.

[FAQ](#)

[Understand hardware requirement before switching to QuTS hero](#)





Welcome to the QTS Smart Installation system!

Thank you for choosing QNAP. Smart Installation will guide you through the installation process. This process may take a few minutes depending on the installed hard drives.

Start Smart Installation

Switch OS

QuTS^{hero}

QTS

QNAP Systems, Inc.
All Rights Reserved.

What's the difference between QTS and QuTS hero?

How to migrate data from an old NAS?

Backup ? Storage ? Surveillance

QNAP is your best choice.

Simple Backup

Superior hardware performance with an [all-in-one Backup Solution](#) to speed up backup/recovery tasks.

- **Back up all your devices**
- **Remote Replication for NAS data**

PC and Mac backup

Sync your computer files to NAS with Qsync. TS-264 also supports Time Machine for Mac computers.

License-free VM backup

Back up multiple VMware® and Hyper-V™ VMs using Hyper Data Protector.

File server backup

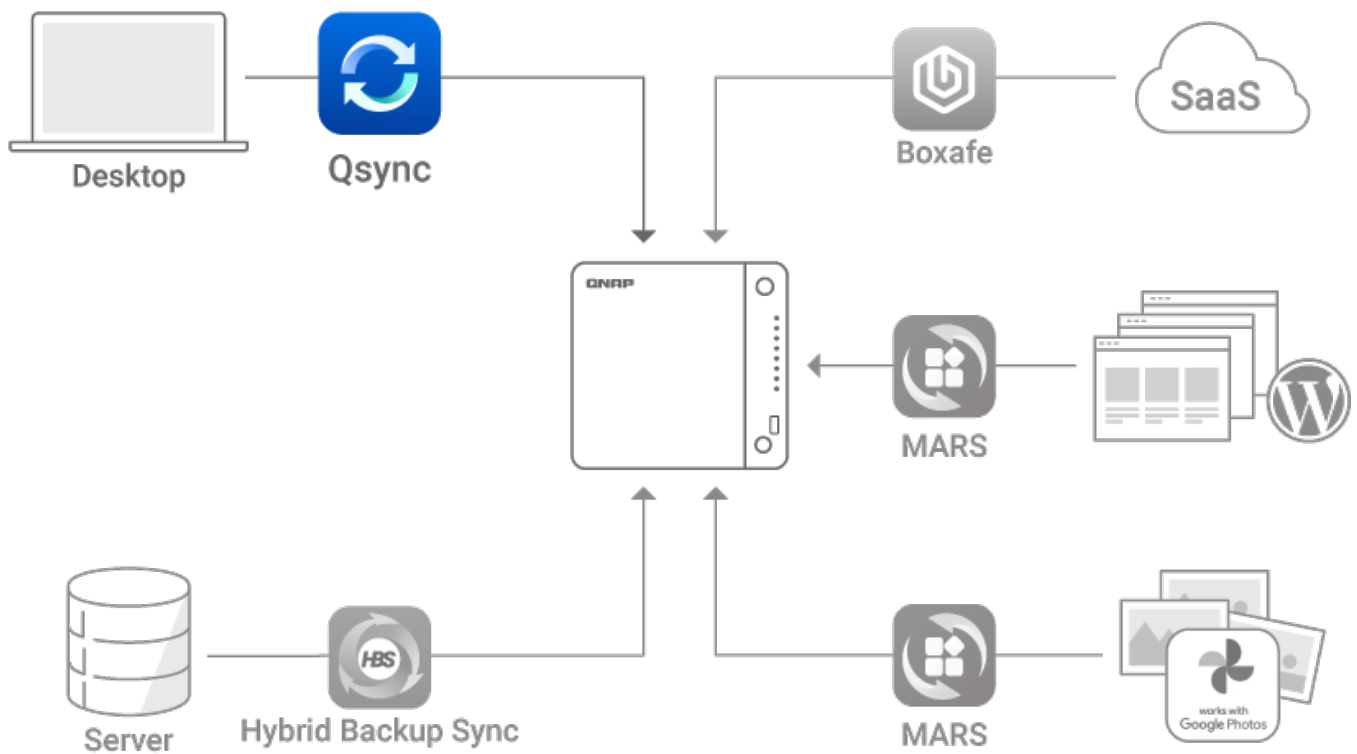
Supports multiple protocols such as Rsync, FTP and CIFS for backing up different file servers.

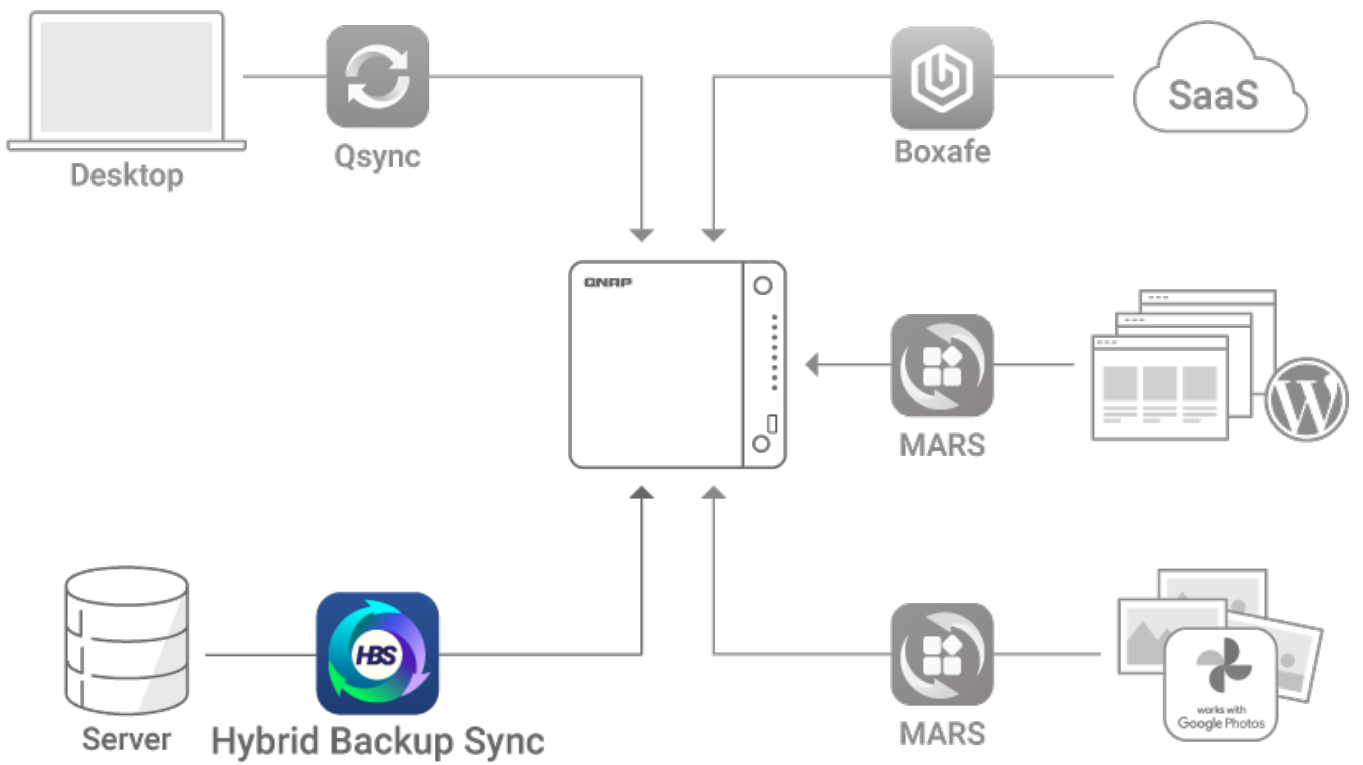
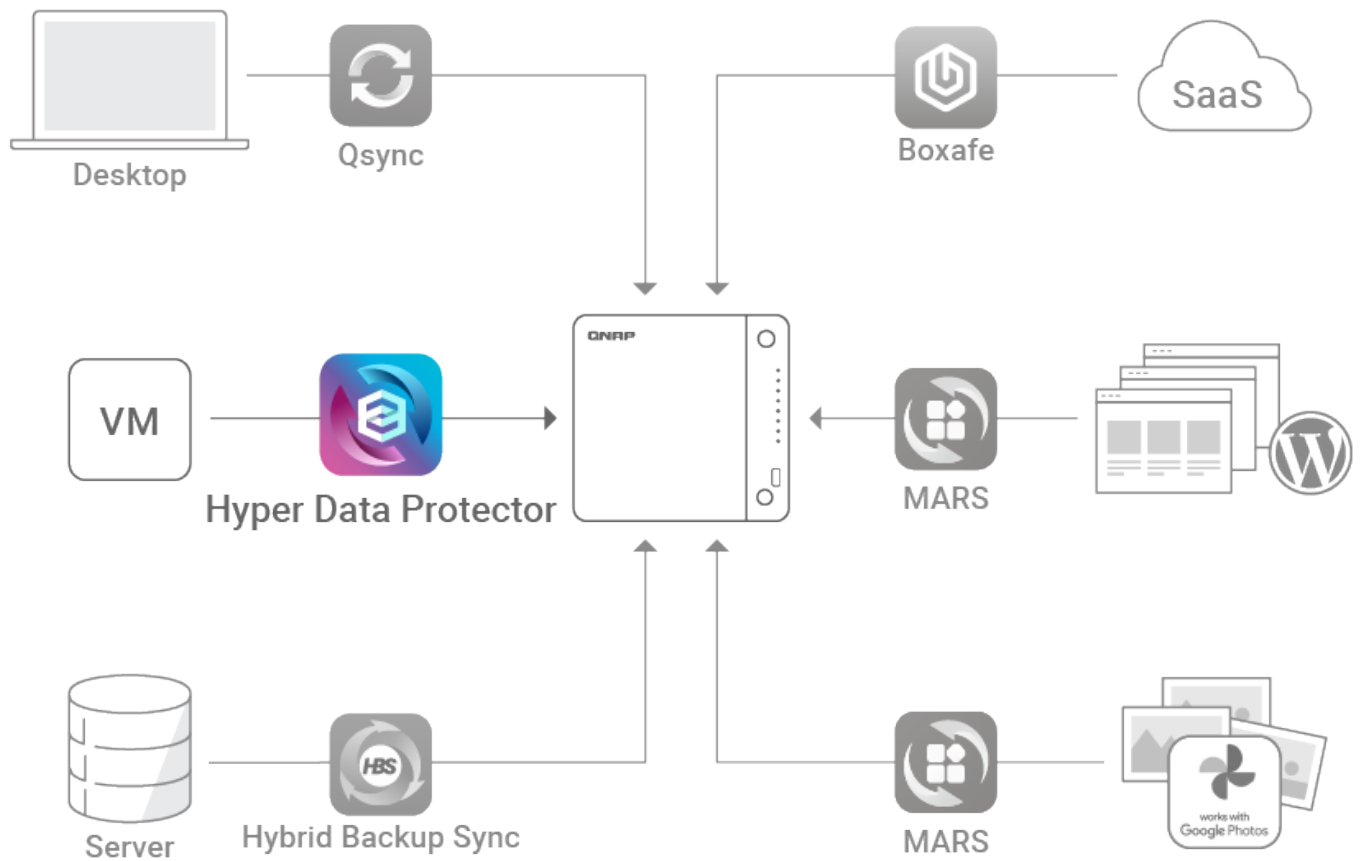
SaaS Business Backup Solution

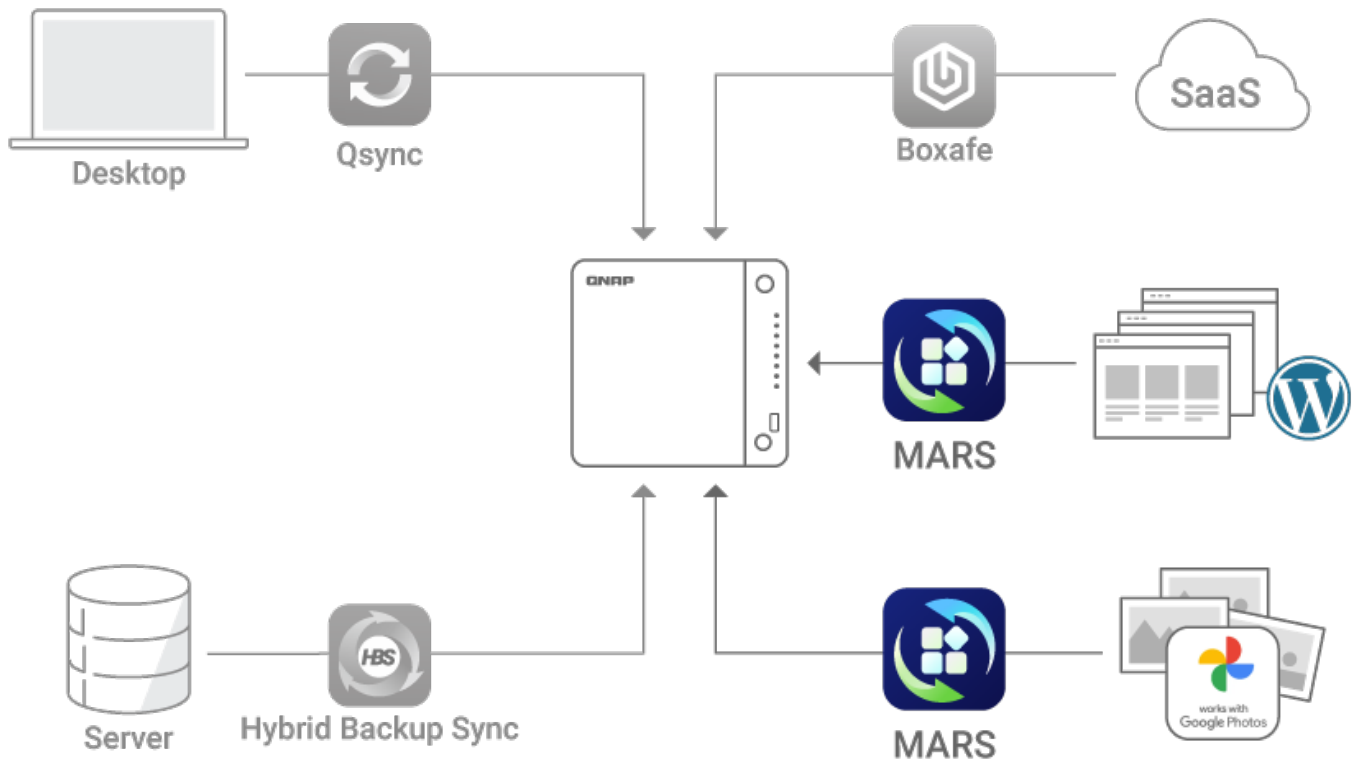
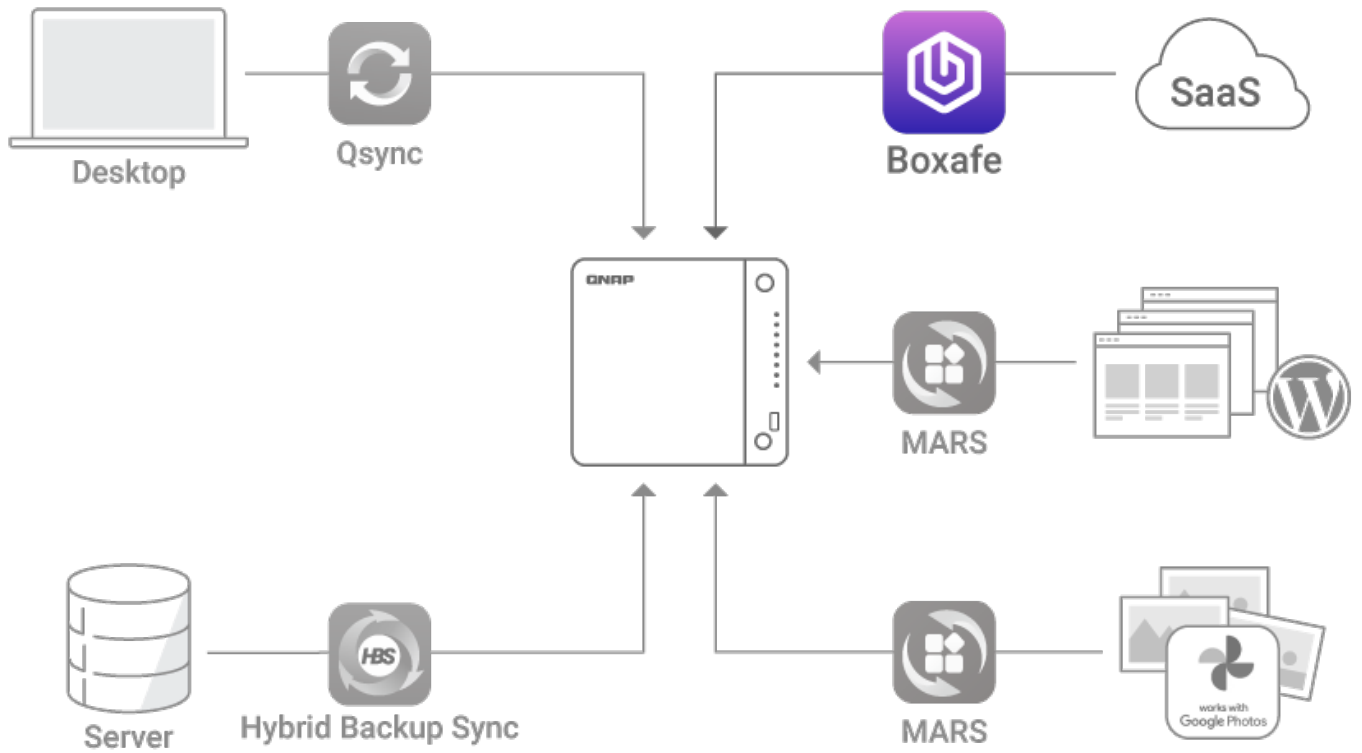
Use Boxafe to easily back up Google™ Workspace and Microsoft 365® business account data.

Google Photos and WordPress backup

The exclusive MARS service enables backing up Google Photos and WordPress databases and files to NAS.







Back up data from one NAS to another NAS

Back up data on a local NAS to another remote NAS using [Hybrid Backup Sync](#). You can also deduplicate your backup using QuDedup to save time and storage space.

Back up NAS data to the Cloud

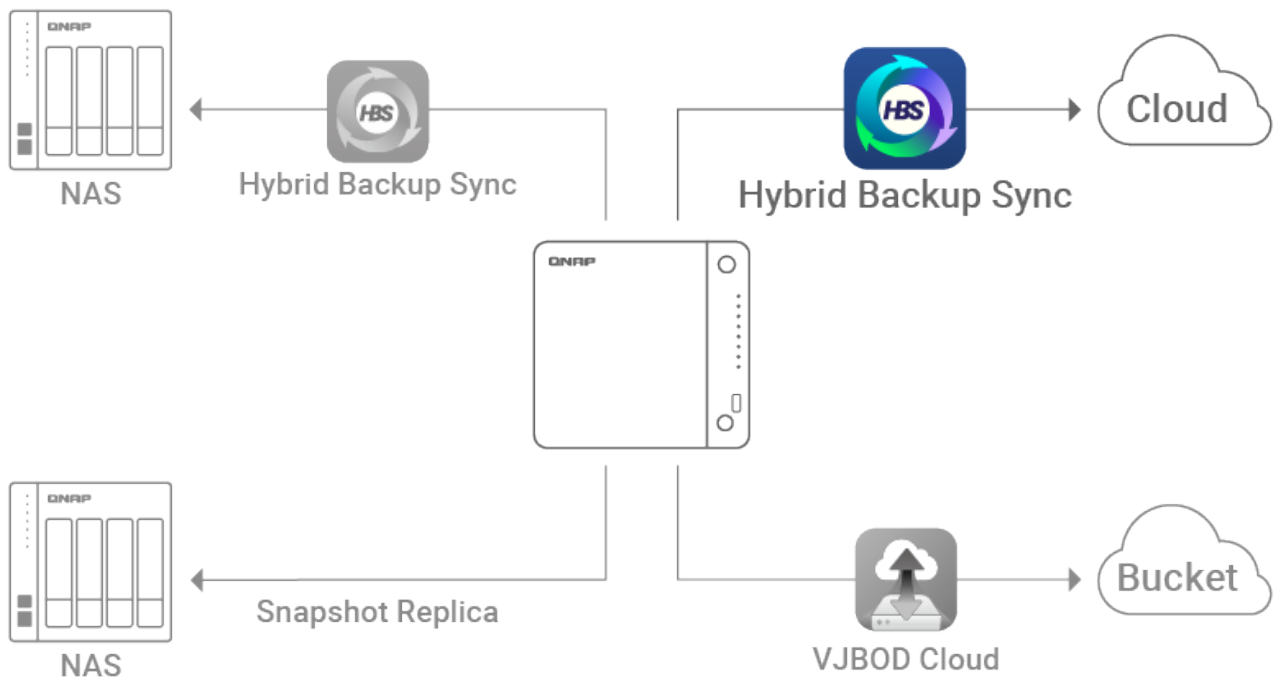
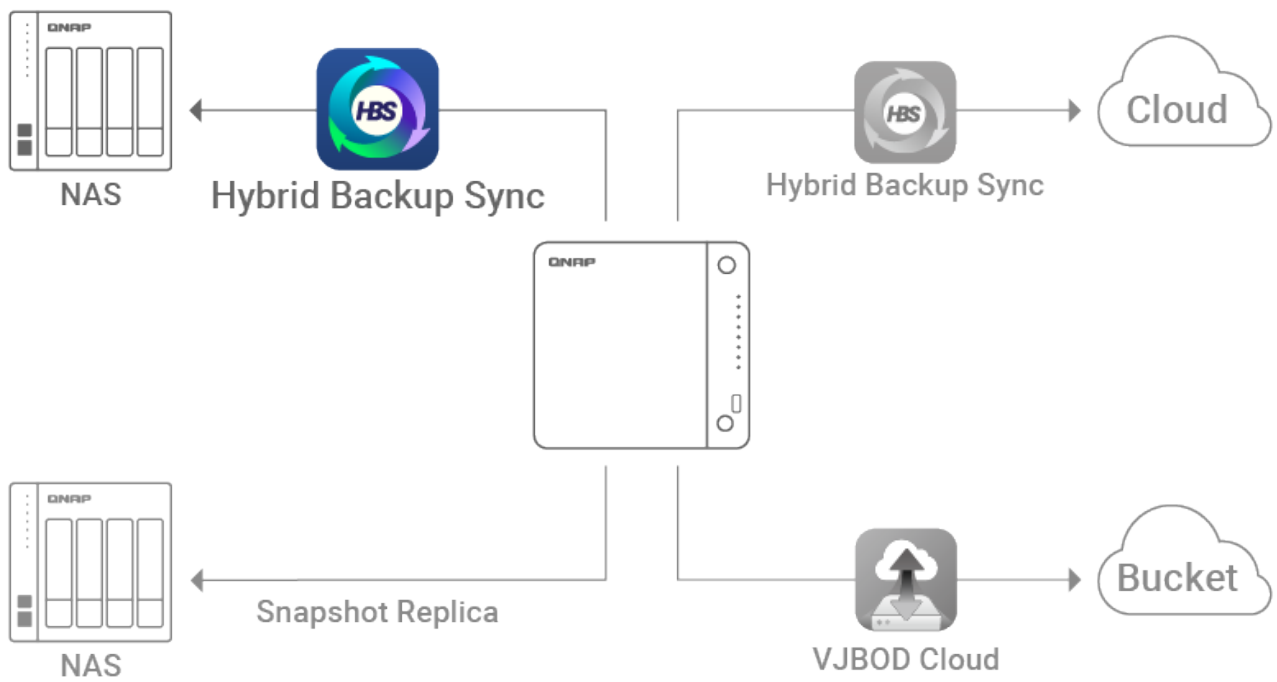
Hybrid Backup Sync supports mainstream public cloud services for backing up or syncing data from NAS to Cloud.

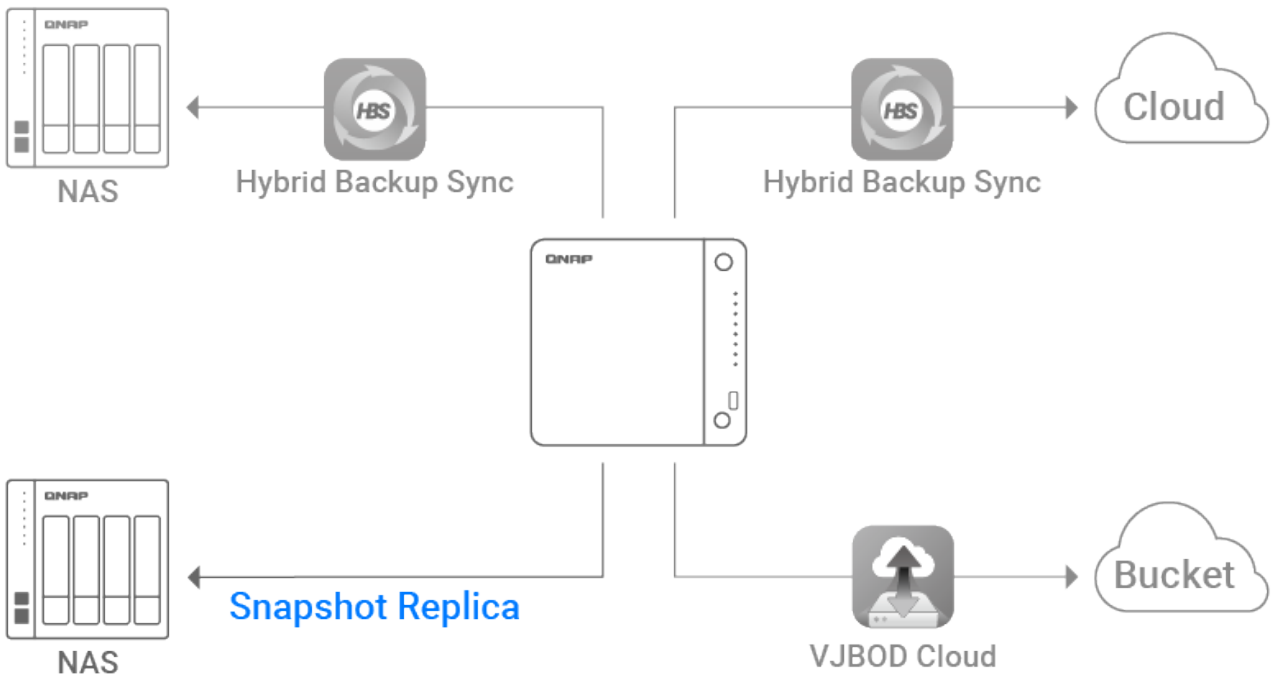
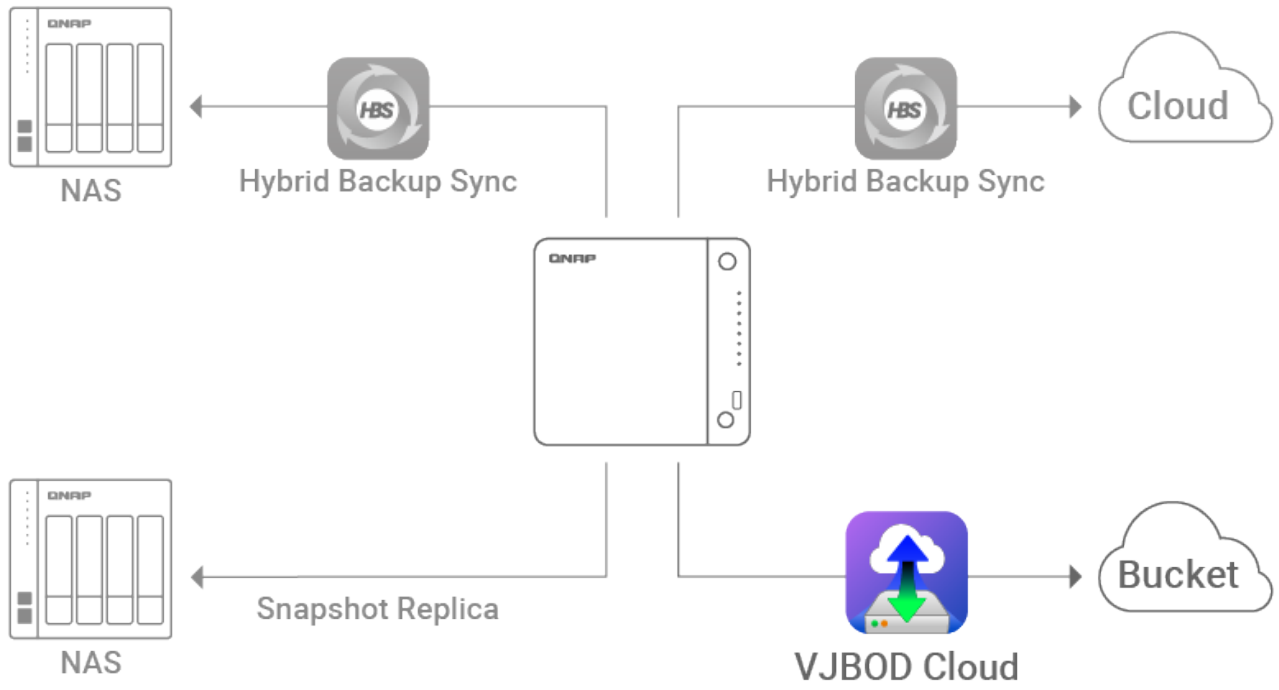
Cloud Storage Gateway

[VJBOD Cloud](#) connects cloud object storage (Bucket) and back up data from NAS to the cloud.

Back up NAS snapshots

Use Snapshot Replica to back up [NAS snapshots](#) to another NAS and recover when needed.





Smart storage

QNAP's exclusive apps provide easy-to-use file storage and collaboration tools. Snapshots also help protect important data from Ransomware.

- **Snapshots protection**
- **Boost production efficiency**

Volume and LUN snapshots

"[Snapshots](#)" record the complete status of your NAS system and data. Certain data and files can be reverted when needed.

Versioning

Regularly create snapshots. The more snapshots you have, the lower the risk of data loss.

Smart snapshot space management

QNAP supports smart snapshot space management to ensure there is enough storage space for new snapshots.

The screenshot displays the QNAP Snapshot Manager interface. On the left, a sidebar menu lists various storage and snapshot management options. The main area shows a timeline of snapshots for 'DataVol1', which is currently 'Ready'. A specific snapshot from 2022-06-06 at 01:00 is highlighted. A pop-up window shows the contents of this snapshot, listing several system and application folders. On the right, a summary panel provides details about the selected snapshot, including its taken time, replication status, retention policy, status, capacity, and description.

Storage & Snapshots

Snapshot Manager

DataVol1
Ready

Schedule Snapshot **Take Snapshot**
Daily 01:00

Month Total: 25/256

Timeline of snapshots:

- 2022/07: 10 :2
- 2022/07: 10 :1
- 2022/04: 10 :1
- 2022/01: 10 :1
- 2021/10: 10 :1
- 2021/07: 10 :1

Selected snapshot: **GMT+08_2022-06-06_0100**

Contents of snapshot:

- ☐ .@app_center
- ☐ .@backup_code_signing
- ☐ .@backup_config
- ☐ .@backup_qbox
- ☐ .@qmonitor
- ☐ .@upload_cache
- ☐ .antivirus
- ☐ .codesigning

Summary:

- Taken: 2022-06-06 01:00:02
- Replicated: No
- Retention Policy: [Smart Versioning](#)
- Status: **Ready**
- Capacity: 16.35 GB
- Description: No description

Restore **Clone** **Revert volume snapshot**

Storage & Snapshots

Storage & Snapshots

Overview

Storage

Disks/VJBOD

Storage/Snapshots

Cache Acceleration

External Storage

Remote Disk

Topology

Snapshot Backup

Snapshot

Snapshot Replica

Snapshot Vault

iSCSI & Fibre Channel

HybridMount

SSD Profiling Tool

VJBOD Cloud

Snapshot Manager

Pool Guaranteed Snapshot Space

DataVol1

Ready

Schedule Snapshot

Take Snapshot

Daily 01:00

Open in File Station

Month Total: 25/256

2022/07

2022/06

2022/04

2022/01

2021/10

2021/07

GMT+08_2022-06-06_0100

☐

.@app_center

☐

.@backup_code_signing

☐

.@backup_config

☐

.@backup_qbox

☐

.@qmonitor

☐

.@upload_cache

☐

.antivirus

☐

.codesigning

1 / 1

Show 50 Item(s)

Taken: 2022-06-06 01:00:02

Replicated: No

Retention Policy: Smart Versioning

Status: Ready

Capacity: 16.35 GB

Description: No description

Restore

Clone

Revert volume snapshot

Storage & Snapshots

Storage & Snapshots

Overview

Storage

Disks/VJBOD

Storage/Snapshots

Cache Acceleration

External Storage

Remote Disk

Topology

Snapshot Backup

Snapshot

Snapshot Replica

Snapshot Vault

iSCSI & Fibre Channel

HybridMount

SSD Profiling Tool

VJBOD Cloud

Snapshot Manager

Pool Guaranteed Snapshot Space

DataVol1

Ready

Schedule Snapshot

Take Snapshot

Daily 01:00

Open in File Station

Month Total: 25/256

2022/07

2022/06

2022/04

2022/01

2021/10

2021/07

GMT+08_2022-06-06_0100

☐

.@app_center

☐

.@backup_code_signing

☐

.@backup_config

☐

.@backup_qbox

☐

.@qmonitor

☐

.@upload_cache

☐

.antivirus

☐

.codesigning

1 / 1

Show 50 Item(s)

Taken: 2022-06-06 01:00:02

Replicated: No

Retention Policy: Smart Versioning

Status: Ready

Capacity: 16.35 GB

Description: No description

Restore

Clone

Revert volume snapshot

[Qsync](#)

Sync files between NAS and multiple computers or mobile devices.

[Qsirch](#)

Quickly find documents, media files, and emails using key words, colors, or faces.

[Qfiling](#)

Create filing rules and set schedules to automatically archive files into dedicated folders based on their category.

[QuMagie](#)

TS-264 leverages powerful AI photo management and creates smart photo albums based on people, objects, locations, and events, making photos easy to find and share.

Qsync Central

admin

Qsync

Overview

Management settings

Users

Devices

Shared Folders

Team Folder

Shared File Links

Version Control

Event Logs

Overview

Enabled ON | Current Mode: [Central Configuration Mode](#)

Ready
Sync your files anytime, anywhere.

System Status

9%

CPU

54%

Memory Usage

Storage Space

Used

12.0 GB

Quota

2.0 TB

0%

Online Users

Total

1

[Details](#)

Online Devices

1

0

0

[Details](#)

Start to use Qsync ^

Qsirch

Elsa

10+

Qsirch Lite [Go Premium](#)

Hi **Elsa**, what would you like to search for today?

Q All

Images | Videos | Music | Documents | PDF | Email

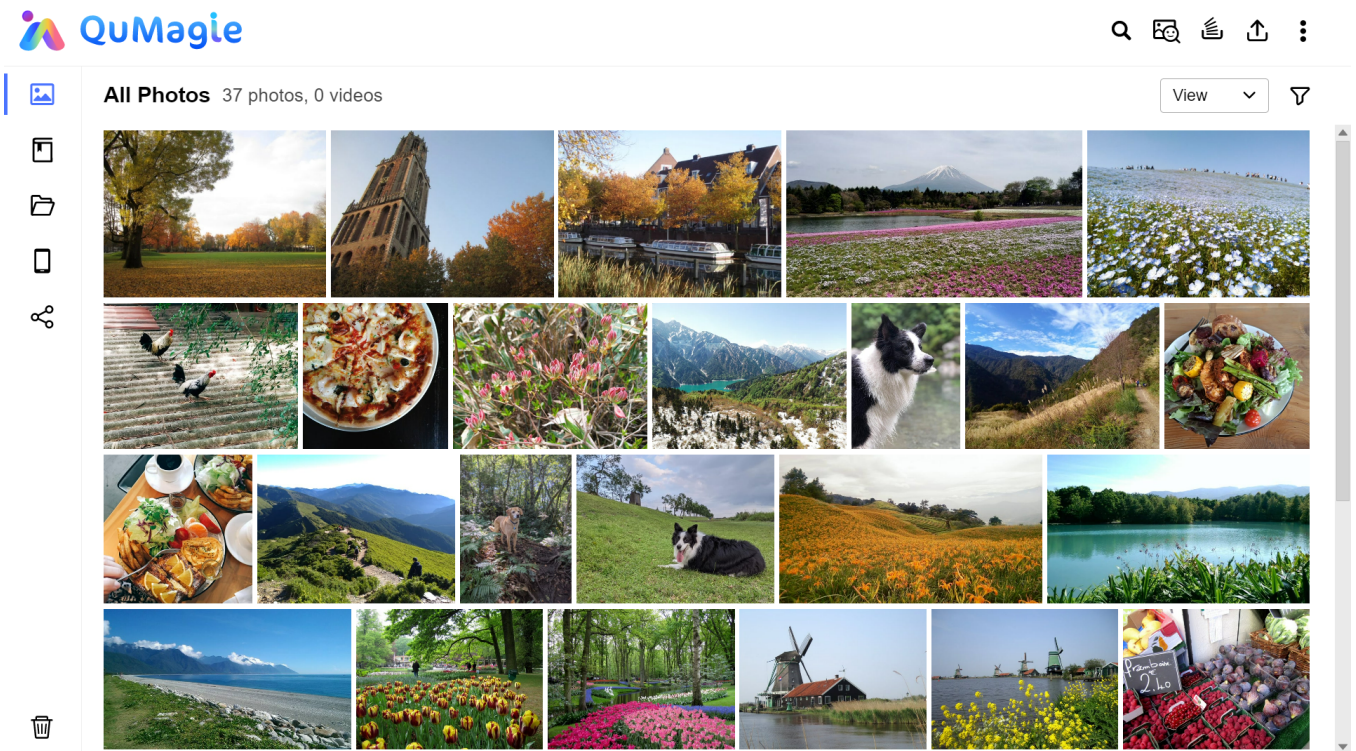
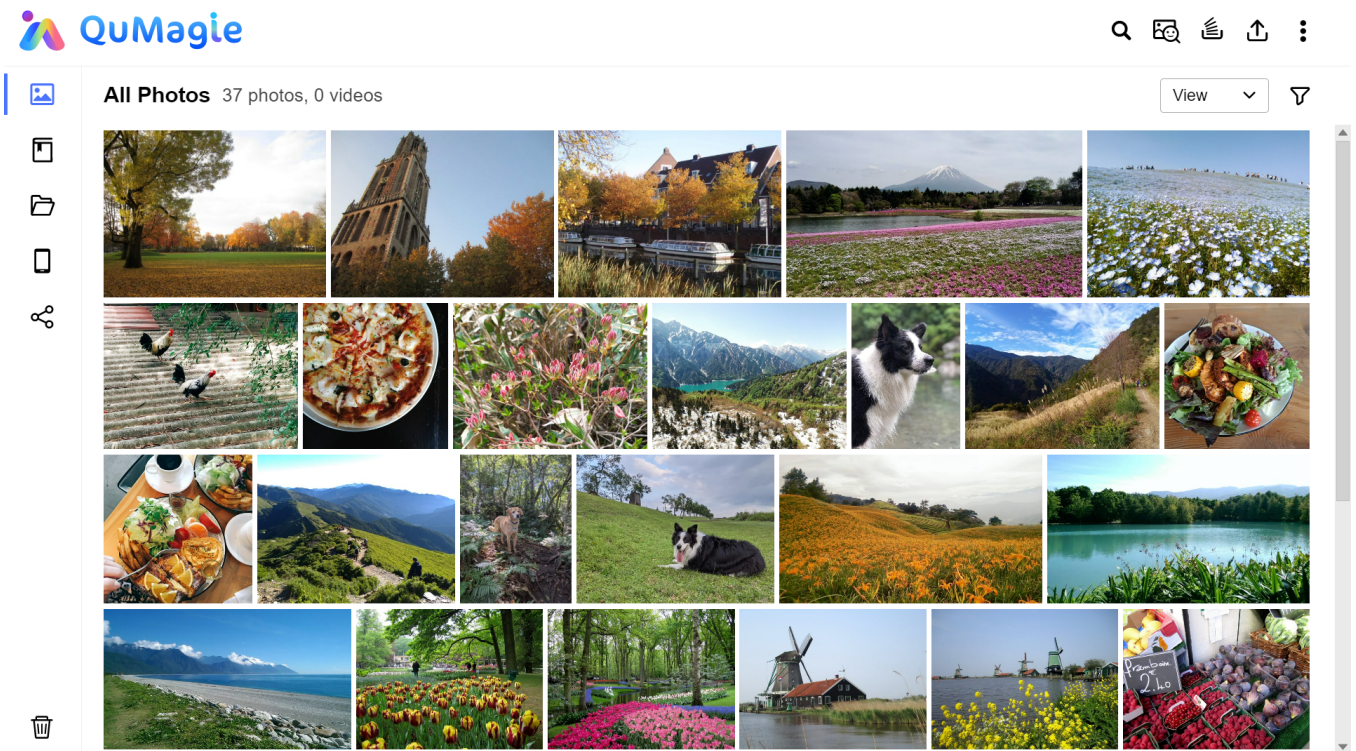
Want to try other ways of searching?

Index Summary
Search files by selecting an indexed keyword in a file type.

Image Content Search
Search images by things categorized from the image content.

Map Search
Quickly search and specify the locations of your photos on an interactive map.

People Image Search
Search for photos of a person with an image.



Smart surveillance

TS-264 provides a professional surveillance NAS solution, compatible with 6,000+ IP cameras of 190+ brands and thousands of ONVIF network cameras.

- **Build surveillance with affordable deployment costs**
- **Live surveillance monitoring, remote management, and smart AI**

All-in-one surveillance

Say goodbye to expensive and complicated PC NVR. QNAP's integrated surveillance NAS solution offers a [subscription licensing](#) solution or [perpetual licensing solution](#) for flexible deployment based on your needs.

Connect to HDMI™ monitor

TS-264 supports has HDMI™ output for direct surveillance video playback, removing the need for a dedicated workstation.

Surveillance failover

Install the high-availability [QVR Guard](#) app to automatically takeover recording tasks if a QVR Pro server fails.







Live surveillance video monitoring

Monitor live feeds and receive alert event notifications from client applications on PCs or mobiles.

Large-scale central management

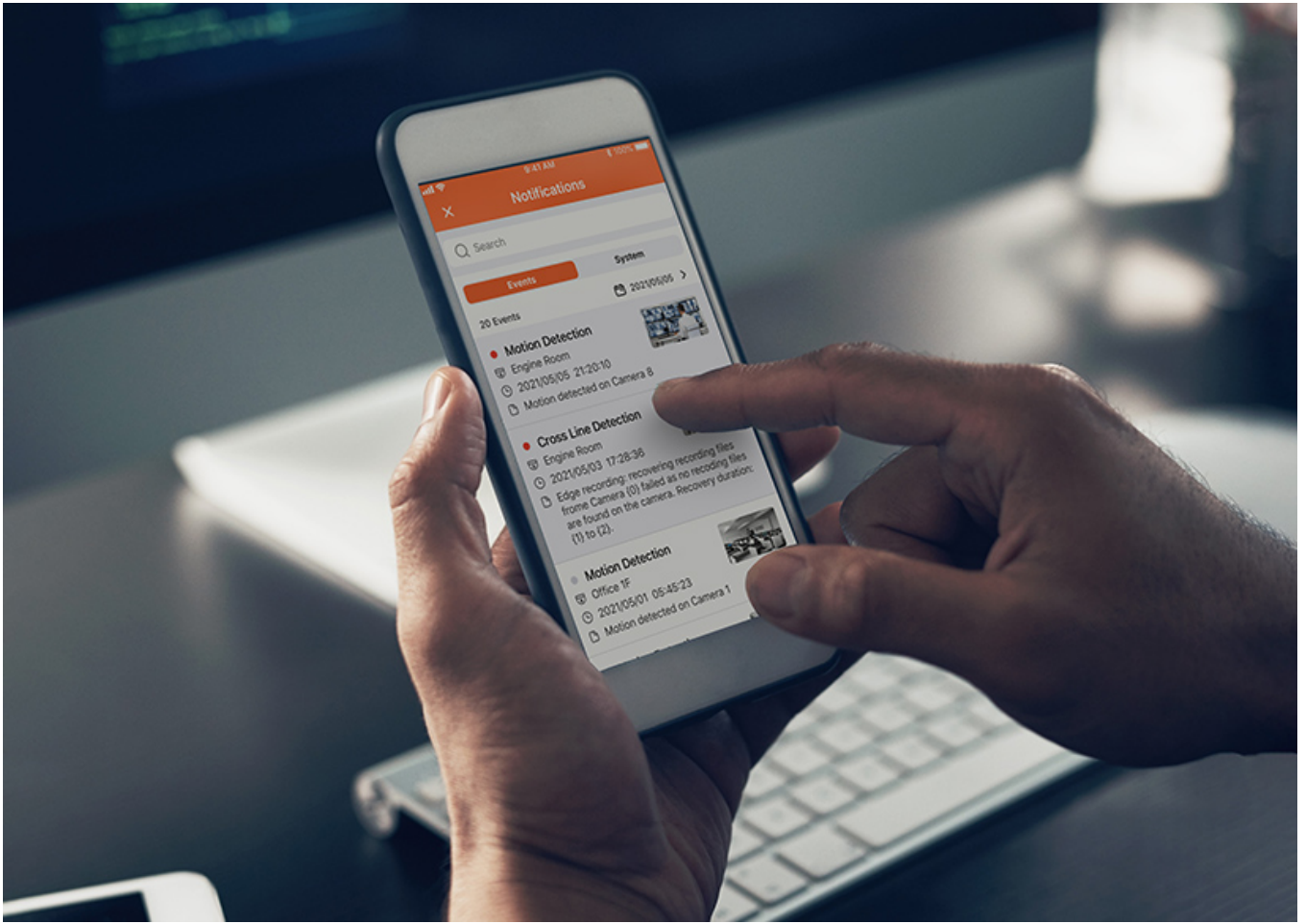
Centrally control up to 256 Surveillance NAS (licenses sold separately) in different locations via [QVR Center](#).

AI surveillance event search

Instead of manually searching through a whole day of event videos, [QVR Smart Search](#) helps you efficiently search through hundreds of hours of video recordings from hundreds of cameras to find specific events.

MP4 surveillance videos

With GPU-accelerated video conversion, surveillance videos can be converted to various file formats or resolutions for smooth playback on multiple devices.









All-in-one solution for hosting virtual machines and containers

By running multiple virtual machines and containers on the TS-264, you can deploy multi-tenant environments and applications to increase management efficiency and save hardware costs. Coupled with the Network & Virtual Switch app that boosts

interoperability between virtual machines, containers, QNAP NAS, and other physical devices on the network, you can flexibly allocate physical and virtual network resources to simplify network deployment.

-

Virtualization Station

Run multiple Windows®, Linux®, UNIX®, Android™, and QuTScLOUD virtual machines and access them via a web browser or Virtual Network Computing (VNC).

Learn More: [Virtualization Station](#)

-

Container Station

Experience Docker®, LXD, and Kata Containers lightweight virtualization technologies, download apps from the built-in Docker Hub Registry®, import/export containers, and create abundant microservices.

Learn More: [Container Station](#)

-

Linux Station

Run Linux® applications directly on the NAS and remotely access the Linux® desktop from a web browser. The open-source Linux® platform is also ideal for Internet of Things development.

Learn More: [Linux Station](#)

Enhanced cybersecurity and data protection

TS-264 is loaded with comprehensive privilege settings and security measures. Besides, there are abundant apps that help ensure optimal NAS protection against threats like malware and hackers.

- **Account security**

Supports Azure Active Directory Domain Services (Azure AD DS), LDAP, and Windows ACL to help IT staff efficiently manage user accounts and access rights for multiple NAS systems. Use 2-Step Authentication for all user accounts to protect against brute force attacks.

- **Secure remote access**

[myQNAPcloud Link](#) allows convenient remote connection to NAS through the Internet. Or you can use [QVPN](#) to set up a VPN connection to the NAS with enhanced security.

- **NAS Firewall**

[QuFirewall](#) restricts and blocks suspicious packets sent by proxy servers and the onion routing (Tor) based on user rules. QuFirewall also dynamically updates its block list based on detected malicious packets.

- **Malware Protection**

Regularly scan your TS-264 using the latest malware definitions. If infected files are detected, they are immediately removed to ensure NAS data security.

A health check for your hard drives

Hard drives are at the heart of your NAS, and ensuring their long-term health and reliability is absolutely crucial. QNAP provides various methods and tools to help you monitor hard drive health, ensuring that you can take proactive decisions to safeguard your data and files.

- **S.M.A.R.T. and back block scanning**

If any of the S.M.A.R.T. values are reported as abnormal, or bad blocks are detected, you can take early action and replace drives before potential data loss occurs.

- **DA Drive Analyzer**

- **Seagate® IronWolf™ Health Management**

Storage & S...

admin

10+

10+

Storage & Snapshots

Disks/VJBOD | NAS and Enclosure: 1 | Disks: 12 , Unused Slot: 2

VJBOD

Overview

Storage

Disks/VJBOD

Storage/Snapshots

Cache Acceleration

External Storage

Remote Disk

Topology

Snapshot Backup

Snapshot

Snapshot Replica

Snapshot Vault

iSCSI & Fibre Channel

HybridMount

SSD Profiling Tool

VJBOD Cloud

Disk Health

Monitor disk health, temperature, and usage status using the disk S.M.A.R.T. mechanism.

NAS Host

3.5" SATA SSD 4

Summary

IronWolf Health Man...

SSD Features

SMART Information

Test

Settings

Advanced

ID	Description	Value	Wor...	Thre...	Raw Value	Status
1	Raw_Read_Error_Rate	100	100	050	0	Good
9	Power-On_Hours	100	100	000	4401	Good
12	Power_Cycle_Count	100	100	000	25	Good
16	Gas_Gauge	100	100	000	2965	Good
17	Unknown_Attribute	100	100	000	2965	Good
168	Unknown_Attribute	100	100	000	0	Good
170	Reserve_Block_Count	100	100	010	126	Good
173	SSD_Wear_Leveling_Count	100	100	000	4939350...	Good

Good

Disk SMART Information: Good

Estimated Life Remaining: 93 %

DA Drive Anal...

Elsa

10+

10+

DA Drive Analyzer

Main registered user: Tim13120

Overview

Drive Prediction

Email Alerts

Additional Information

Alert History

Upload Logs

Overview

Email alert: [Activated](#)

DA Drive Analyzer

Enclosures: 1, Drives: 6 (HDD: 6, SSD: 0, NVMe: 0)

Faulty

0

Critical
(90% risk of failure)

1

Warning
(70% risk of failure)

2

Normal

3

Unlicensed

0

Important: Review Drive Status

Drives: 3 (Faulty: 0, Critical: 1, Warning: 2)

Drive (Enclosure)	Status	Manufacturer	Capacity
3.5" Slot 1 (NAS Host)	Warning	WDC	1.82 TB
3.5" Slot 2 (NAS Host)	Warning	WDC	1.82 TB
3.5" Slot 8 (NAS Host)	Critical	WDC	465.76 GB

License

Total activated licenses: 2

Valid licenses: 2

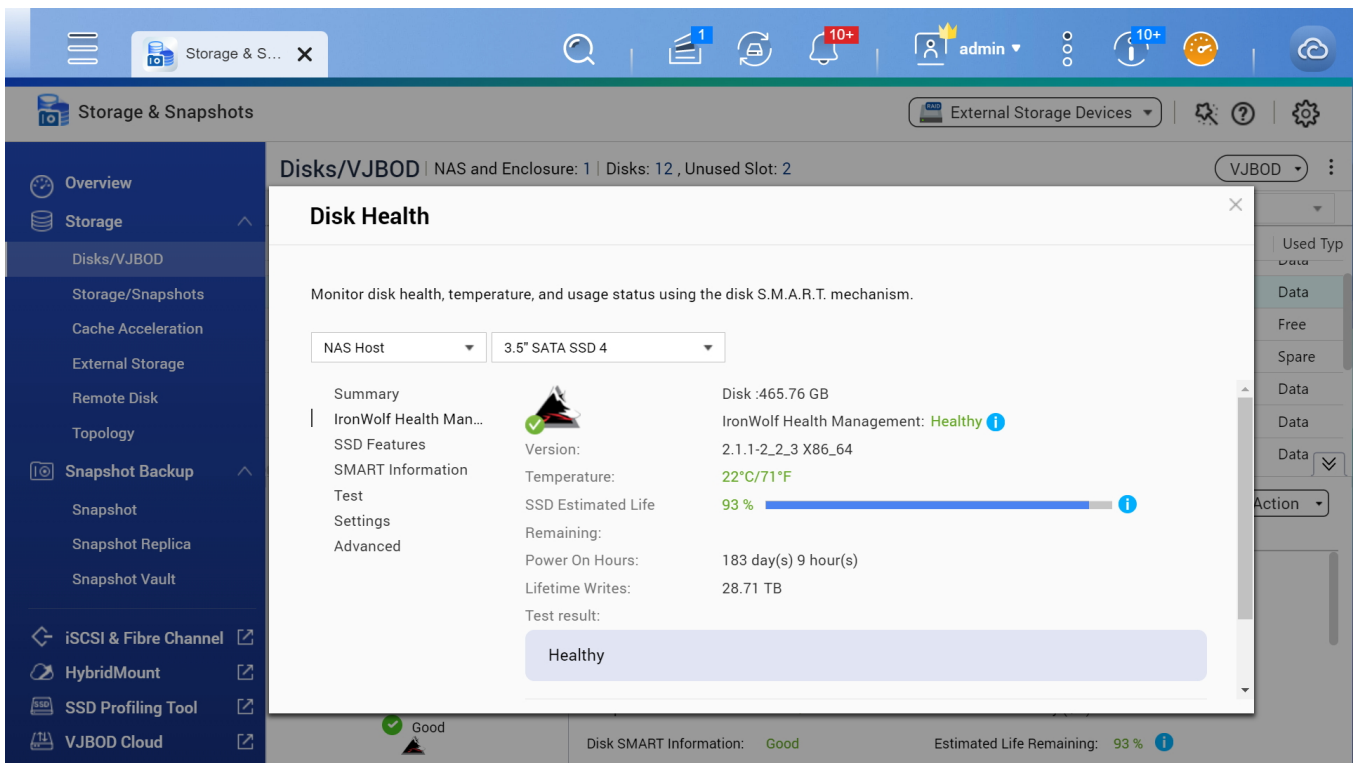
Expired licenses: 0

Total activated license seats: 8

Total used seats: 6

Total unused seats: 2

[License Seat Assignment>>](#)



Extend hardware warranty up to 5 years

The TS-264 is backed by a 3-year warranty at no additional cost. You can also purchase a warranty extension that extends your warranty coverage up to 5 years.

[Learn More](#)

Virtualization Certifications Supported by TS-264



Software Specs

Operating System	QuTS hero h5.2.5
Supported Client Operating Systems	<ol style="list-style-type: none">1. Apple Mac OS 10.10 or later2. Ubuntu 14.04, CentOS 7, RHEL 6.6, SUSE 12 or later Linux3. IBM AIX 7, Solaris 10 or later UNIX4. Microsoft Windows 7, 8, 10, and 11

[Show more...](#)

Supported Browsers	<ol style="list-style-type: none">1. Apple Safari (latest version)2. Google Chrome (latest version)3. Microsoft Edge (latest version)4. Mozilla Firefox (latest version)
Supported Languages	Chinese (Traditional & Simplified), Czech, Danish, Dutch, English, Finnish, French, German, Greek, Hungarian, Italian, Japanese, Korean, Norwegian, Polish, Portuguese (Brazil), Romanian, Russian, Spanish, Swedish, Thai, and Turkish
Storage Pool	
SED Storage Pool	
Maximum Pool size	5 PB
Maximum number of storage pool	128
Shared Folder Type	Thick, Thin
Maximum shared folder size	5 PB
Maximum number of shared folder	256

JBOD Expansion

VJBOD / VJBOD Cloud

iSCSI Service

Fibre Channel Service

LUN Type Thick, Thin

Block-based iSCSI LUN

Maximum LUN size 1024 TB

Maximum number of targets 256

LUN

RAID Type

1. 8-bay (and more): Single, RAID 0 (Stripe), 1, 5, 6, 10, 50, 60, Triple Mirror, Triple Parity
2. 6-bay: Single, RAID 0 (Stripe), 1, 5, 6, 10, 50, Triple Mirror, Triple Parity
3. 4-bay: Single, RAID 0 (Stripe), 1, 5, 6, 10, Triple Mirror, Triple Parity
4. 3-bay: Single, RAID 0 (Stripe), 1, 5, Triple Mirror, Triple Parity

[Show more...](#)

RAID Group

To ensure data security, system stability, and storage performance, the maximum number of drives for a single RAID group is now 16 (applicable to RAID 5, RAID 6, RAID TP, and subgroups of RAID 50 and RAID 60). Nevertheless, users can combine multiple RAID groups into a large storage pool that contains more than 16 drives, using RAID 50, RAID 60, or RAID 10 as the RAID configuration. This enhancement will only be applied to new RAID groups. All existing RAID groups and storage systems will not be affected.

RAID Expansion (by replacing bigger Disks)

Storage Pool Expansion (by adding RAID Group)

RAID Hot Spare Global, Local

RAID Sync/Rebuild/Scrubbing

End-to-End data integrity

Silent error detection and self-healing

Internal drive ZFS

External drive EXT3, EXT4, NTFS, FAT32, HFS+, and exFAT

Disk, Enclosure Locate

Disk S.M.A.R.T. Scan

Disk S.M.A.R.T. Data

Migration

Ironwolf Health Management

Secure Erase

SSD Trim

SSD Life Estimation

Disk Roaming

Disk Standby

Shared Folder Snapshot

LUN Snapshot

Maximum Snapshot (Per System) [Check maximum number of snapshots of your NAS](#)

Maximum Snapshot (Per Volume / LUN) [Check maximum number of snapshots of your NAS](#)

Minimum Snapshot Interval 1 minute

Snapshot Retention Policy

Self-serve Snapshot Recovery

Application Consisted

Snapshot

Snapshot Full Clone

Snapshot Instant Clone

Snapshot Replica / Vault

SSD read-only Cache

SSD read & write log cache

SSD dedicated ZIL cache

SSD Cache Maximum Size [Check your QNAP NAS cache capacity and RAM requirements](#)

SSD Cache RAID 0, 1, 10 (journal)

External Device Management

Mount Smart Phone (MTP)

External RAID Device (QNAP so on) Management (External Device Mode)

External RAID Device (QNAP so on) Management (NAS

Mode)	
File Server	<ol style="list-style-type: none"> 1. File sharing across Windows, Mac, and Linux/UNIX 2. Microsoft networking (CIFS/SMB) 3. Apple networking (AFP) 4. NFS version 3/4 services
FTP Server	<ol style="list-style-type: none"> 1. FTP, SFTP and TFTP protocols 2. FTP over SSL/TLS (explicit FTPS) 3. FXP support
Maximum FTP connection	1024
Shared Folder Data Compression	
Shared Folder Data Deduplication	
Shared Folder WORM	
File Station (Web)	
Object Storage	
Local user account	16,000
Local group account	512
Domain user/group account	200,000
Domain Security	
Domain Controller	
Shared folder permission	
Windows ACL	
User quota	
Group quota	
Folder quota	
Home folder	
Resource Monitor	
SNMP	V2, V3
Network recycle bin	<ol style="list-style-type: none"> 1. Recover files deleted using AFP, CIFS/SMB, and File Station 2. Automatic cleanup and file type filter
System Log & Notification Center	Log recording: 3,000 event per second
Smart Fan	
Schedule on/off	
Internet protocol	IPv4, IPv6
Virtual Switch	
Port trunking	, (7 modes)
VLAN	

DHCP Server	
DDNS (Dynamic Domain Name Service)	
Network access protection with auto-blocking	SSH, Telnet, HTTP(S), FTP, CIFS/SMB, and AFP
Security Counselor	
Malware Remover	
AES 256-bit Folder Encryption validated by FIPS 140-2	
CAVP	
2-step verification	
Allow/Deny List	
Access Protection	
Service binding	
Firewall	
VMware vSphere Ready	
vSphere Web Client Plug-in	
VMware vSphere VAAI for iSCSI	
VMware vSphere VAAI for NAS	
Windows ODX	
Windows/VMware Snapshot Agent	
HTTP/HTTPS Connections	TLS 1.0/1.1/1.2/1.3
Supports WebDAV Connection	
Supports Virtual Hosts	32
Qsync	
	Note: At least 1 GB RAM is required.
[Qsync] Management Mode	User customization, Central
[Qsync] Qsync client supported platforms	Windows, macOS, Ubuntu, Android, and iOS
[Qsync] Maximum number of version control	64
HybridMount	
	Note: At least 1 GB RAM is required.
[HybridMount] File Cloud Gateway	Concurrent Connections = 80 Upload & 80 Download
[HybridMount] Network Drive	

Mount

[HybridMount] Free cloud gateway sessions 2
HBS (Hybrid Backup Sync)

Note: At least 1 GB RAM is required.

[HBS (Hybrid Backup Sync)]
NAS to NAS backup
[HBS (Hybrid Backup Sync)]
Cloud Backup
[HBS (Hybrid Backup Sync)]
Cloud Sync
[HBS (Hybrid Backup Sync)]
2-way and Active Sync
[HBS (Hybrid Backup Sync)]
Backup Deduplication
[HBS (Hybrid Backup Sync)]
Apple Time Machine Backup
[HBS (Hybrid Backup Sync)]
External drive backup
[HBS (Hybrid Backup Sync)] 400
Maximum number of backup job
Hyper Data Protector
Boxafe

Note: At least 4 GB RAM is required.

[Boxafe] Office 365 Backup
[Boxafe] Google Workspace Backup
[Boxafe] Full-text search
Qsirch

Note: This feature is supported by all QNAP NAS devices with at least 2 GB of memory
Photos, music, videos, PDFs, Gmail, and others

[Qsirch] Previews
[Qsirch] Integrate Mac Finder
[Qsirch] Advanced picture search
[Qsirch] Search filters
QuMagie

Note: At least 1 GB RAM is required.

[QuMagie] Browse photos

[QuMagie] Virtual and smart
albums

[QuMagie] AI-assisted photo management People, things, places, and others

Antivirus (free)

McAfee (License)

QVPN Service

Note: At least 1 GB RAM is required.

[QVPN Service] Remote Access PPTP, L2TP/IPSec, OpenVPN, QBelt (QNAP proprietary)

[QVPN Service] Supported utility and mobile app Windows, macOS, iOS, and Android

[QVPN Service] Supported maximum clients 100

HD Station

LDAP Server

RADIUS

SQL server

License Center

Multimedia Console

Photo Station

Music Station

Video Station

Download Station

Notes Station

Qfiling

Media Streaming add-on

QmailAgent

QuWAN

DA Driver Analyzer

Q'center

Note: The application is available in the App Center and in virtual appliance marketplaces (VMware vSphere ESXi and Microsoft Hyper-V).

Q'center Server

Q'center Agent

Connect to Q'center

Virtualization Station

	Note: At least 4 GB RAM is required. Windows, Linux, Unix, and Android
[Virtualization Station] Supports Virtual machine instances	
[Virtualization Station] VM importing, exporting, cloning, snapshot capturing, backup, and restoration	All function is Fine.
[Virtualization Station] Virtual switches	Can create a virtual switch
[Virtualization Station] GPU pass-through	GPU function is fine
[Virtualization Station] Suggested number of virtual machine instances	4 The actual number of virtual machine instances may vary by the memory installed on NAS (e.g. 1 VM= 1 thread for 1 vCPU and 1GB memory). Please expend memory if needed.

Container Station

	Note: At least 1 GB RAM is required. LXC/LXD and Docker
[Container Station] Supported type	
	Note: LXD has been supported after Container Station 2.4
[Container Station] Docker Hub Registry	
[Container Station] Container importing and exporting	
[Container Station] Console mode	
Linux Station	

	Notification: At least 4 GB RAM is required.
[Linux Station] Supports Ubuntu versions	16.04, 18.04, and 20.04
Linux Station Center	
QVR Elite	

Note: At least 1 GB RAM is required. The maximum number of channels supported varies by NAS model, network configuration, and camera settings. For more information, visit <https://www.qnap.com/go/qvr-nas-selector>.

[QVR Elite] Recording Technique	Standard MP4 file based
[QVR Elite] License Type	Subscription-based
[QVR Elite] User-defined trigger events	
[QVR Elite] QVR Pro Client (Desktop)	Windows, macOS, and QNAP HybridDesk Station
[QVR Elite] QVR Pro Client (Mobile)	Android and iOS
[QVR Elite] Recording camera H.264 streams	
[QVR Elite] Free built-in camera channels	2
[QVR Elite] Expandable camera channels	Developing
QVR Center	

Note: At least 4 GB RAM is required.

[QVR Center] Log management
[QVR Center] Central monitoring across multiple servers